



## W5 CONGENITAL MALFORMATIONS, ONE AND SEVEN YEARS

The Congenital Malformations, One and Seven Years work file was created by the NINCDS staff under the supervision of Dr. Ntinios C. Myriantopoulos.

A discussion of the classification of malformations, including examples of the criteria used for specific malformations, is:

Myriantopoulos, NC, and CS Chung, 1974. Congenital malformations in singletons: epidemiologic survey. Birth Defects: Original Article Series: X, 11.

The following material was extracted from unpublished documentation written by Dr. Myriantopoulos in 1977.

The monitoring of congenital malformation in NCPP children through the 7th year of life represents a longitudinal follow-up which began at delivery. The first assessment of congenital malformations was made through the age of one year, at which time a congenital malformation was defined as a gross physical or anatomic developmental anomaly which was present at birth or was detected during the first year of life. Under this definition tumors, syndromes of metabolic etiology which showed associated gross physical or anatomic anomalies, infections which resulted in physical or anatomic anomalies, and anomalies of dentition, were considered as congenital malformations.

The definition of malformations which were present in NCPP children at age one year or which appeared at any time between ages of 1 and 7 years is simply an extension of that used to define malformations through the first year of life. This extension is based on a reasonable assumption that the malformation process began during the developmental continuum of form and function which extends well beyond the neonatal period.

It is not possible to enumerate and describe the criteria used in the diagnosis of each specific malformation. Suffice it to say that the diagnoses were made in accordance with criteria and instructions given in the appropriate manuals, which included direct visualization, measurements, radiologic evidence, karyotyping, metabolic studies, and clinical impression. For some malformations, special criteria, beyond those included in the manuals, had to be developed. For example, the diagnosis of hypertelorism was made only if the interpupillary and intercanthal distances exceeded 3 standard deviations from the mean measurements, i.e. 6 cm for interpupillary and 3.5 cm for intercanthal distances.

Following the format established for malformations through the age of one year, the 7-year malformations have been categorized into major and minor on the basis of general guidelines rather than strict criteria. These guidelines include threat to life, severity, necessity for major surgery and cosmetic significance. It is understood that a priori assignment of certain malformations to the minor category serves only the purpose of defining the malformations and describing their epidemiological characteristics. But until we are able to establish which minor malformations are worth detecting and why, and which ones can be ignored as clinical variants, any analysis involving the NCPP children's medical conditions should include both major and minor malformations.

Because of the time span over which NCPP children have been followed varied considerably in a proportion of cases, it is necessary to study the 7-year malformations in two separate cohorts: 1) in those children who were alive at one year of age, were followed through the age of 7 years, and had a 7-year pediatric-neurologic examination; and 2) in those children who were alive at one year of age, but who in the interval between 1 and 7 years either died or were lost to the study.

Many additional papers describing results of Dr Myriantopoulos' study of malformations are listed in the NINCDS bibliography.

#### WORK FILE CHARACTERISTICS

This file contains 59,391 records that are 420 characters in length. This work file is available on 1600 bpi 9 track tape with 4200 characters per block.

TABLE OF DATA ITEMS

Congenital malformations, one and seven years

ITEM ID	DATA CARD NUM	FROM	TO	DATA ITEM NAME
6245.....W-5		1	0	MINDR case number
6246.....W-5		10	10	Malformation; congenital, nth, 1 year, source of information, PED-8: CHILD, 1 YEAR, MALFORMATIONS
6247.....W-5		11	11	Malformation; congenital, nth, 1 year, source of information, PED-17: CHILD, 1 YEAR, MALFORMATIONS
6248.....W-5		12	13	Blank
6249.....W-5		14	17	Malformation; congenital, nth, 1 year, code: CHILD, 1 YEAR, MALFORMATIONS
6250.....W-5		18	177	Malformation; congenital, nth, 1 year, repeat of positions 10-17 for possible malformations: 2 to 21: CHILD, 1 YEAR, MALFORMATIONS
6251.....W-5		178	178	ZYGOSITY: PLURAILITY: CHILD, GENERAL, OBSERVATIONS
6252.....W-5		179	179	FATHER NUMBER. (W-5 file): FATHER, GENERAL, ADMINISTRATIVE
6253.....W-5		180	180	Blank
6254.....W-5		181	181	Malformation; congenital, nth, 7 year, source of information, (PED-29, PED-76, chart): CHILD, 7 YEAR, MALFORMATIONS
6255.....W-5		182	186	Malformation; congenital, nth, 7 year, code: CHILD, 7 YEAR, MALFORMATIONS
6256.....W-5		187	420	Malformation; congenital, nth, 7 year, repeat of locations 181-186 for possible malformations 2 to 40: CHILD, 7 YEAR, MALFORMATIONS

Congenital Malformation File

Cols. 10-177 - One Year Malformations (Birth - 1 Year)  
Cols. 181-420 - Seven Year Malformations (1 - 7 Years)

Tape locs.  
1-9

NINDS NUMBER

Code: As given

10-17

First one year Congenital Malformation

Ped-8 Malformation (10)

Code: 0 - Absent  
1 - Present  
Blank - No Ped-8 present

Ped-12 Malformation (11)

Code: 0 - Absent  
1 - Present (Ped-11)  
2 - Present (Prior exam or Ped-29)  
3 - Combination of codes 1 and 2  
4 - Present (History only)  
Blank - No Ped-12 present

Blank (12-13)

Malformation Recode (14-17)

Code: Four-digit code as given on recode listing.

Note: 0000 = No congenital malformation  
Blank = No Ped-8 or Ped-12

18-177

Second through Twenty-First Congenital Malformation

Code: Same as First Congenital Malformation if needed

178

Zygosity

Code: Blank - Single birth  
1 - Monozygot  
2 - Dizygot  
3 - Zygosity unknown

179

Father Number

Code: Blank - Single registration  
1 - Repeat registration, first father reported  
2-5 - Repeat registration, second through  
fifth father reported  
9 - Unknown father number

180

Blank

Tape locs.  
181-186

First Seven Year Congenital Malformation

Source (181)

Code: 1 - Ped-76 and CP-5  
2 - Prior exam or Ped-29  
3 - Combination of codes 1 and 2  
4 - History only

Malformation Recode (182-186)

Code: Five digit code as given on recode listing

Note: Blank = 477 cards not present  
00000 = 477 cards - no malformation

187-420

Second through Fortieth Malformation if needed.

MAJOR MALFORMATIONS AT ONE YEAR

<u>Central Nervous System Malformations and Related Skeletal Conditions</u>	<u>PED-8 Codes</u>	<u>PED-12 Codes</u>	<u>Recodes</u>
Anencephaly	184		1001
Microcephaly	186	228	1002
Hydranencephaly	188	230	1003
Hydrocephaly	190	232	1004
Macrocephaly	227	226	1005
Forencephaly	248	256	1006
Craniosynostosis	192	244	1007
Abnormal separation of sutures	194		1008
Cranium bifidum		218	1009
Bony defect skull		281	1010
Hypoplasia skull bones	244		1011
Platybasia		283	1012
Rachischisis	250		1013
Encephalocele	198	258	1014
Meningomyelocele/Meningocele	200	260	1015
Absence of corpus callosum	226		1016
Absence or hypoplasia of olfactory nerve and/or bulb	228		1017
Arrhinencephaly	234		1018
Cerebral hypoplasia, frontal	236		1019
Absence post. lobe pituitary, agenesis pituitary	249		1020

	<u>FED-8 Codes</u>	<u>FED-12 Codes</u>	<u>Revised</u>
Ventricle fused with left eye, ectopic cord tip	595		1021
Suboccipital cyst			
Cyst septum pellucidum	229		1022
Suboccipital sinus tract	238		1023
Non-specific malformation of brain	251		1024
Cord abnormality	246		1025
Cystic mass lumbosacral area	230		1026
Hydromyelia	240		1027
Absence sacrum	242		1028
	232		1029
<u>Musculoskeletal Abnormalities</u>			
<u>Absence or hypoplasia of extremity or part:</u>			
Mandible			
Upper extremity		323	1101
Forearm	278	309	1102
Humerus	279	286	1103
Radius	280	287	1104
Ulna	282	288	1105
Hand	284	289	1106
Fingers	286	304	1107
Lower extremity	288	305	1108
Femur	266	308	1109
Distal femoral epiphysis	268	311	1110
	265		1111



	<u>PED-8 Codes</u>	<u>PED-12 Codes</u>	<u>Recsdc</u>
Tibia	270	284	1112
Fibula	272	285	1113
Foot	274	306	1114
Talus		324	1115
Toes	276	307	1116
Sternocleidomastoid muscle	289		1117
Pectoralis muscle	290	303	1118
Rectus abdominis muscle	291		1119
Ribs	292	290	1120
Ribs and spine	293	319	1121
Phocomelia		320	1122
Hemimelia		<del>321</del>	1123
Hemivertebrae		322	1124
Hypoplasia jaw	331		1125
Abnormally long maxilla and mandible	327		1126
Torticollis	298	314	1127
Webbed neck	836	882	1128
Cervical ribs	342		1129
Anomalies of ribs	287		1130
Vertebral abnormality	254	292	1131
Cleft hallux	285	245	1132

	<u>PED-8 Codes</u>	<u>PED-12 Codes</u>	<u>Recode</u>
Congenital adduction wrists and abnormal thumbs		240	1133
Congenital ankylosis elbow with dislocation head radius and abnormal hands		242	1134
Constricting bands hand			
Abduction and contracture hip	350		1135
Adduction or contracture or tightness hip		235	1136
		013,237	1137
Congenital dislocation or dysplasia of the hip	262	300	1138
Coxa valga			
Coxa vara		126	1139
Contractures elbows or knees or extremity		127	1140
		717	1141
Congenital dislocation knees			
Congenital contracture hamstrings	346		1142
Talipes valgus		122	1143
Talipes varus		881	1144
Talipes equinus varus		880	1145
Metatarsus adductus	256	294	1146
Talipes calcaneovalgus	258	296	1147
Talipes calcaneovarus	260	298	1148
Equinovalgus	344	241	1149
Constrictive bands above ankle		014	1150
		125	1151

	<u>PTD-8 Codes</u>	<u>PTD-12 Codes</u>	<u>Records</u>
Absence pubic fusion	340		1152
Hemihypertrophy	329	718	1153
Hypertrophy extremity		652	1154
Scoliosis, Lordosis, Kyphosis		326	1155
Fibrous dysplasia of bone	343		1156
Arthrogryposis multiplex	300	316	1157
Achondroplasia	302	704	1158
Macrosomia	958		1159
TALIPES CAVUS		452	1160
<u>Eye Conditions</u>			
Cataract	356	334	1201
Corneal opacity	358	336	1202
Microphthalmia	360	338	1203
Anophthalmia	368		1204
Aniridia	370	343	1205
Buphthalmos, glaucoma	372	347	1206
Coloboma	374	346	1207
Exophthalmos, proptosis	376	207	1208
Eye herniation	378		1209
Detached retina		348	1210
<u>Ear Conditions</u>			
Absence or deformity external meatus	402	359	1251

Upper Respiratory Tract and  
Mouth Conditions

	<u>ID-8 Codes</u>	<u>FED-12 Codes</u>	<u>Recode:</u>
Choanal atresia	420	396	1301
Choanal stenosis	444	397	1302
Cleft palate	422	368	1303
Cleft lip	426	372	1304
Absent uvula	440		1305
Bifid tongue	442		1306
Micrognathia	430	376	1307
Absent bridge of nose	436		1308
Absent floor of antrum	438		1309
Abnormality nasal cartilage bone, septum		395	1310

Thoracic abnormalities

Deformed thorax	462		1351
Square-shaped thorax	463		1352
Pectus excavatum	468	418	1353
Pectus carinatum (pigeon)	464	420	1354
Flaring ribs	466		1355
Congenital malformation, rib number or form		415	1356
Congenital defect pleural	435		1357
Absence lung, right or left	452		1358
Absence lobe or lobes, incomplete division	454	439, 440	1359

	<u>PED-8 Codes</u>	<u>PED-12 Codes</u>	<u>Recode</u>
Extra lobes, lung	457		1360
Hypoplasia or immaturity, lung	458		1361
Lung cyst or cysts	456	442	1362
Pneumatocele	455	441	1363
Anomaly of diaphragm	448		1364
Eventration of diaphragm		408	1365
Diaphragmatic hernia, epigastric hiatus		407	1366
Hiatal hernia		409	1367
<u>Cardiovascular Conditions</u>			
Cardiac enlargement	542	468	1401
Fibroelastosis	536	462	1402
Endocardial cushion defect	567	490	1403
Endocardial sclerosis	568		1404
Absent vertricle	561		1405
Hypoplastic left heart	585		1406
Hypoplastic right ventricle	569	427	1407
Hypertrophy right ventricle	572	411	1408
Hypoplasia left auricle	562, 571		1409
Cor biloculare	586	481	1410
Cor triloculare	565	486	1411

	<u>PED-8 Codes</u>	<u>PED-12 Codes</u>	<u>Recorder</u>
Patent ductus arteriosus	553	482	1412
Absence ductus arteriosus	611		1413
Common truncus arteriosus	564		1414
Absent coronary sinus	578		1415
Anomalous muscle band at septum	729		1416
Situs inversus, dextroversion, dextroposition, levorotation	557	489,404	1417
Atrial septal defect	549	456	1418
Atrioventricular canal (communis)	550	478	1419
Ventricular septal defect	552	475	1420
Atresia mitral valve	563		1421
Bifid ant. leaf mitral valve or rudimentary valve	560		1422
Tricuspid atresia	588	426,365	1423
Bifid aortic valve	583	364	1424
Absent coronary artery	582		1425
Aortic atresia	547		1426
Hypoplastic aorta	548		1427
Coarctation aorta	551	480	1428
Aortic arch anomaly, stenosis	559	477,492	1429
Right aortic arch	580	488	1430
Double aortic arch		204	1431

	<u>PED-8 Codes</u>	<u>PED-12 Codes</u>	<u>Recode:</u>
Overriding aorta	597		1432
Abnormal aortic cusp	730		1433
Pulmonary atresia or hypoplasia	577	203	1434
Aberrant right pulmonary artery		428	1435
Coarctation right pulmonary artery		429	1436
Pulmonary stenosis		487	1437
Aneurysm of pulmonary artery, sinus valsalva, aortic valve	591		1438
Single pulmonary vein and artery	589		1439
Anomalous pulmonary drainage	558	476	1440
Left superior vena cava	579		1441
Anomaly inferior vena cava with azygous drainage	594		1442
Inferior vena cava anast. to left atrium	587		1443
Anomalous right subclavian	555	473	1444
Missing carotid (left)	575		1445
Vascular ring	581	367	1446
Absent umbilical artery	554		1447
Absent renal artery	593		1448
Transposition of great vessels	570	366	1449
Tetralogy of Fallot		412	1450
Ebstein's couple.	566		1451

Alimentary Tract  
Malformations

	<u>PED-8 Codes</u>	<u>PED-12 Codes</u>	<u>Recode</u>
Tracheo-esophageal fistula	602	401	1501
Esophageal atresia	639	529	1502
Pyloric stenosis	640	510	1503
Duodenal atresia	604	525	1504
Hypoplastic small intestine	631		1505
Atresia small intestine	634		1506
Pancreatic duct stenosis		548	1507
Dysplasia pancreas	637	522	1508
Meckel's diverticulum	645	499	1509
Microcolon	647		1510
Megalcolon	650	508	1511
Atresia colon	633		1512
Hirschsprung's disease (aganglionosis of ileum and colon)	746		1513
Duplication cecum, bowel	635	527	1514
Malrotation	606	514	1515
Abdominal situs inversus	625	546	1516
Visceral perforation	610	512	1517
Inguinal hernia	614	495	1518
Umbilical hernia	608	496	1519
Supra umbilical hernia	623		1520
Ventral hernia	619		1521
Femoral hernia	616		1522



	<u>PED-8 Codes</u>	<u>PED-12 Codes</u>	<u>Recodes</u>
Absence ligament of Treitz	643		1523
Common or single mesentery	644		1524
Omphalomesenteric cyst	652		1525
Rectal fistula		547	1526
Imperforate anus	612	498	1527
<u>Abnormalities of Liver, Bile Duct and Spleen</u>			
Absent gall bladder	657		1551
Biliary atresia	665	532	1552
Absent spleen	663		1553
<u>Genitourinary Conditions</u>			
Hypospadias	658	554	1601
Epispadias	687	562	1602
Penile hypoplasia with hypoplastic testes	691	585, 586	1603
Polycystic testicles	708		1604
Undescended testicles, bilateral	552		1605
Scrotum fixed to half length of penis with chordee	694		1606
Hypoplasia scrotum		587	1607
Clitoral hypertrophy	675	561	1608
Hypoplastic vagina and vulva	689		1609
Prolapse vaginal mucosa	696		1610

	<u>PED-8 Codes</u>	<u>PED-12 Codes</u>	<u>Recodes</u>
Cystic mass protruding from vagina	787		1611
Double vagina and/or uterus	717	164	1612
Double cervix	789		1613
Bicornuate uterus	785		1614
Dysgenesis of ovaries	792		1615
Multicystic ovary	706	543	1616
Rectovaginal fistula	790	544	1617
Rectourethral fistula	709		1618
Urogenital sinus		580	1619
Urethral meatal stenosis		583	1620
Agensis bladder	715		1621
Absent right hemi-trigone bladder	713		1622
Extrophy of bladder	698		1623
Hypertrophy of bladder	705		1624
Bladder outflow or urethral obstruction	668	565	1625
Bladder diverticulum	707		1626
Absent ureter	714		1627
Absent both ureters	718		1628
Double ureter, ureters	788	163	1629
Hydrourter, megaloureter	680	573	1630
Hydronephrosis	680	574	1631

	<u>FED-8 Codes</u>	<u>FED-12 Codes</u>	<u>Recodes</u>
Tortuosity of ureters, stenosis, kink	711		1632
Single kidney	710	171	1633
Absent kidneys bilateral	786		1634
Hypoplastic kidney	704		1635
Horseshoe kidney	703	166	1636
Cystic kidney	682	576	1637
Absent glomerulogenesis with persistent mullerian duct	717		1638
Epiplocele		165	1639
Pseudohermaphroditism	693	582	1640
ECTOPIC KIDNEY		424	1641
<u> Tumors</u>			
Glioma brain		600	1701
Astrocytoma		192	1702
Neuroblastoma	995	190	1703
Retinoblastoma		591	1704
Tumor replacing right upper dental ridge and adj. palate		593	1705
Hemangioma forehead beneath periosteum		597	1706
Hemangioma orbit		598	1707
Subepidermal fibroma		592	1708
Eosinophilic granuloma		599	1709

	<u>PED-8 Codes</u>	<u>PED-12 Codes</u>	<u>Records</u>
Juvenile xanthogranuloma		187	1710
Lipoma		188	1711
Lipomyxoma		189	1712
Hygroma	996		1713
Mass neck	998		1714
Lung, large tumor of bronchial origin (hamartoma?)	990		1715
Carcinoid tumor of lung	993		1716
Wilms's tumor	994	191	1717
Cystic mass abdominal wall	813		1718
Intra abdominal calcified mass	997		1719
Myoepithelial hamartoma, ileum		594	1720
Hepatoblastoma (primary)	989		1721
Papilloma, sacrum midline	812		1722
Teratoma sacrococcygeal area	992		1723
<u>Skin Conditions and Malformations</u>			
Cavernous hemangioma	818	662	1751
Lack of subcutaneous fat	838		1752
<u>Syndromes</u>			
Mongolism	888	686	1801
Gonadal dysgenesis	890	688	1802

	<u>PED-8 Codes</u>	<u>PED-1.2 Codes</u>	<u>Recodes</u>
Adrenogenital	892	690	1803
Marfan's	894	692, 328	1804
Pierre Robin	896	694	1805
Horner's	900		1806
Apert's	901		1807
Chondrodystrophia calc. congenita	902		1808
Trisomy	903	707	1809
Cleidocranial dysostosis	904	708	1810
Cornelia de Lange	905		1811
Osteogenesis imperfecta	906	712	1812
Dandy-Walker	907		1813
Eagle's	908		1814
Lowe's	911	656	1815
Potter's	912		1816
Cranio-carpal-tarsal dystropony	925		1817
Infantile cortical hyperostosis (Caffey's)		706	1818
Klinefelter's		653	1819
Klippel-Feil		654	1820
Nail-patella		631	1821
Neurofibromatosis		632	1822
Treacher-Collins		633	1823

	<u>FED-8 Codes</u>	<u>FED-12 Codes</u>	<u>Recorder</u>
Cranial facial dysostosis		121	1824
<u>Other Endocrine or Metabolic Diseases</u>			
Albinism	928	723	1851
Cretinism	916	715	1852
Goiter	963		1853
Cystic fibrosis of pancreas	918	720	1854
Hurler's syndrome		698	1855
Pompe's disease (glycogen storage)		220	1856
Sex linked recessive cataracts, ment. retardation, renal function abnormality	930	728	1857
<u>Infection</u>			
Congenital rubella syndrome	913	710	1901
Congenital lues		839	1902

MINOR MALFORMATIONS AT ONE YEAR

<u>Central Nervous System Malformations and Related Conditions</u>	<u>PED-8 Codes</u>	<u>PED-12 Codes</u>	<u>Recodes</u>
Pilonidal sinus	202	262	2051
<u>Musculoskeletal Abnormalities</u>			
Polydactyly	294	310	2171
Syndactyly	296	312	2172
Marked separation of 2 or more digits	332		2173
Ulnar deviation hands or digits	335		2174
Abnormal position of fingers	338		2175
Clinodactyly		233	2176
Genu recurvatum	330		2177
Enlargement thigh and leg	345		2178
Abnormal position or deviation of toes	336	236	2179
Hammer toes	339		2180
Abduction feet or forefoot		234	2181
Adduction heel		238	2182
Bilateral vertical tali		239	2183
Contracture of toes or fingers		124	2184
Abnormal fingers or thumbs or toes		120	2185
Flexion deformity, contractions	341		2186

	<u>FED-8 Codes</u>	<u>FED-12 Codes</u>	<u>Recodes</u>
Hypermobility or extensibility of joints	337		2187
<u>Eye Conditions</u>			
Nasolacrimal duct stenosis		345	2226
Iris cysts, pupillary membrane		197	2227
Megalocornea		198	2228
Wedge defect, superior cornea		201	2229
<u>Ear Conditions</u>			
Low set ears	392		2276
Deformed ear pinna	394	352	2277
Branchial cleft anomaly	396	354	2278
Accessory auricle		360	2279
Preauricular skin tag		361	2280
<u>Upper Respiratory Tract and Mouth Conditions</u>			
Cleft uvula (bifid)	424	370	2326
Cleft gum	428	374	2327
Malformation of epiglottis and larynx	432	378	2328
Delayed teeth eruption, hypodontia		387	2329
Anomalous shape, malformation of teeth		388	2330



	<u>PED-8 Codes</u>	<u>PED-12 Codes</u>	<u>Recodes</u>
Supernumerary teeth		389	2331
Fused teeth		390	2332
Hypoplasia of enamel, pitting		391	2333
Notched teeth		392	2334
Macroglossia		398	2335
Hemihypertrophy tongue	328		2336
Thyroglossal duct cyst		400	2337
Sublingual cyst (Ranula)	443		2338
Ectopic salivary gland	445		2339
Saddle nose		399	2340
<u>Cardiovascular Conditions</u>			
Persistent superior vena cava	576		2476
<u>Alimentary Tract Malformations and Other Conditions</u>			
Ectopic pancreas	638	528	2536
Anomalous shape pancreas	646		2537
Accessory spleen	664	539	2538
Ectopic spleen	672		2539
Focal malform: bile ducts	667		2540
Choledochal cyst		541	2541
Congenital duodenal bands		524	2542

	<u>PED-8 Codes</u>	<u>PED-12 Codes</u>	<u>Recodes</u>
Mesenteric cysts		500	2543
Rectal polyp	653		2544
Anal fissure	632		2545
<u>Genitourinary Conditions</u>			
Chordee	660	556	2676
Absence of ventral foreskin	676		2677
Ectopic urethral meatus	686		2678
Double urethral meatus		560	2679
Periurethral cyst	692		2680
Undescended testicle, unilateral	550		2681
Bifid scrotum		599	2682
Testicular or epididymis torsion		581	2683
Fusion or adhesions, labia minora or majora		571	2684
Imperforate hymen	690	588	2685
Hymen cyst	685		2686
Vaginal cyst	697		2687
Gartner's duct cyst	688		2688
Follicular cyst of ovary	699		2689
Glomerular cyst	700		2690
<u>Tumors</u>			
Bone cyst		193	2741

<u>Skin Conditions and Malformations</u>	<u>PED-8 Codes</u>	<u>PED-12 Codes</u>	<u>Recode:</u>
Strawberry/portwine hemangioma	816	658,660	2776
Hairy pigmented nevus	820	664,666	2777
Lymphangioma	822	668	2778
Sclerema	824		2779
Supernumerary nipples.	830		2780
Café au lait spots	832	670	2781
Vitiligo	835		2782
White forelock	837		2783

## 7-YEAR MALFORMATIONS

### I. MAJOR MALFORMATIONS

<u>Central Nervous System and Related Skeletal</u>	<u>IDC-77 Codes</u>	<u>Recodes</u>
Macrocephaly	0500	11001
Microcephaly	0501	11002
Hydranencephaly	0502	11003
Hydrocephaly	0503	11004
Porencephaly	0543	11005
Craniosynostosis NOS (excludes codes 0534, 0536, 0537, 0538 and 0539, and recodes)	0523	11006
Brachycephaly	0534	11007
Plagiocephaly	0536	11008
Scaphocephaly	0537	11009
Turriccephaly	0538	11010
Trigonocephaly	0539	11011
Cranial asymmetry	0540	11012
Hyperostosis cranii	0552	11013
Encephalocele	0544	11014
Ventricular dilation	0579	11015
Aqueduct stenosis	0504	11016
Absence of corpus callosum	0580	11017
Arnold-Chiari malformation	0576	11020

	<u>ICD-77</u> <u>Codes</u>	<u>Recodes</u>
Meningomyelocele/meningocele	0545	11021
Rachischisis	0574	11022
Wide spinal canal	0578	11023
Caudal aplasia	0577	11024
<u>Musculoskeletal</u>		
Absence of hypoplasia of:		
face (hemiatrophy)	0673	11101
maxilla	0680	11102
clavicle	0678	11103
scapula	0670	11104
upper extremity	0679	11105
humerus	0674	11106
forearm	0612	11107
hand	0672	11108
fingers	0609	11109
lower extremity	0607	11110
femur	0671	11111
patella	0681	11112
tibia	0606	11113
foot	0608	11114
metatarsal bones	0682	11115
talus	0683	11116

	<u>IDC-77</u> <u>Codes</u>	<u>Recodes</u>
toes	0675	11117
vertebrae	0610	11118
ribs	0613	11119
sternocleidomastoid muscle	0614	11120
pectoralis muscle	0611	11121
trapezius muscle	0677	11122
rectus abdominis muscle	0676	11123
Torticollis	0617	11124
Webbed neck	0644	11125
Hyperplasia of upper extremity	0626	11126
Sprengler deformity	0651	11127
Chronic subluxation of shoulder	0650	11128
Chronic subluxation of elbow	0642	11129
Synostosis of radius and ulna	0660	11130
Lobster claw (split hand)	0620	11131
Arachnodactyly	0638	11132
Synarthrosis of fingers	0639	11133
Hemihypertrophy of arm or leg	0631	11134
Contracture of elbow or knee	0652	11135
Hyperplasia of lower extremity	0636	11136
Abduction and contracture of hip	0645	11137
Adduction and contracture of hip	0624	11138
Congenital dislocation/dysplasia of hip	0604	11139

	<u>IDC-77</u> <u>Codes</u>	<u>Recodes</u>
Internal rotation of hip	0629	11140
Anteversion of femoral head	0662	11141
Perthes disease	0647	11142
Genu recurvatum	0648	11143
Heel cord tightening	0653	11144
Talipes cavus	0656	11145
Talipes varus	0621	11146
Talipes valgus	0622	11147
Talipes equinovarus	0601	11148
Metatarsus adductus	0602	11149
Talipes calcaneovalgus	0603	11150
Scoliosis, lordosis, kyphosis	0646	11151
Exostoses	0625	11152
Osteochondritis (Kohler)	0655	11153
Fibrous dysplasia of bone	0659	11154
Arthrogryposis multiplex	0618	11155
<u>Eye</u>		
Anophthalmia	0736	11201
Microphthalmia	0704	11202
Hypertelorism	0740	11203
Orbital asymmetry	0707	11204

	<u>IDC-77 Codes</u>	<u>Recodes</u>
Enophthalmos	0725	11205
Exophthalmos, proptosis	0710	11206
Ptosis	0718	11207
Blepharophimosis	0732	11208
Buphthalmos, glaucoma	0716	11209
Megalocornea	0729	11210
Aphakia	0724	11211
Cataract	0702	11212
Corneal opacity	0703	11213
Dislocation of lens	0737	11214
Coloboma of lens	0731	11215
Eccentric pupil	0726	11216
Coloboma of iris	0715	11217
Coloboma of choroid	0738	11218
Coloboma of optic nerve	0714	11219
Ocular albinism	0706	11220
Leukoma adhaerens	0739	11221
Persistent hyaloid artery	0733	11222
Retinoschisis	0727	11223
Detached retina	0720	11224



	<u>IDC-77 Codes</u>	<u>Recodes</u>
<u>Ear</u>		
Microtia	0807	11251
Absence or deformity of external auditory meatus	0808	11252
<u>Upper Respiratory Tract and Mouth</u>		
Absence of nasal bridge bones	0960	11301
Abnormality of nasal cartilage or bone	0958	11302
Choanal atresia	0970	11303
Microstomia	0968	11304
Cleft palate	0900	11305
Cleft lip	0902	11306
Abnormality of velum	0962	11307
Absent uvula	0967	11308
Malocclusion	0931	11309
Tooth enamel defect	0932	11310
Ankyloglossia	0956	11311
Bifid tongue	0971	11312
Micrognathia	0904	11313
Exostosis of hyoid bone	0908	11314
<u>Thoracic and Lower Respiratory Tract</u>		
Deformed thorax	1045	11351
Barrel chest	1044	11352

	<u>ICD-77 Codes</u>	<u>Recodes</u>
Asymmetry of thorax	1043	11353
Pectus excavatum	1040	11354
Pectus carinatum (pigeon)	1041	11355
Flaring of thoracic cage	1022	11356
Rib malformation, number or form	1021	11357
Tracheal stenosis	1124	11358
Absence or hypoplasia of lung	1105	11359
Absence of lobe or incomplete division	1104	11360
Supernumerary lobe	1108	11361
Alveolar duct stenosis	1106	11362
Pneumatocele	1107	11363
Eventration of diaphragm	1001	11364
Diaphragmatic hernia	1002	11365
<u>Cardiovascular</u>		
Cardiac enlargement	1206	11401
Fibroelastosis	1203	11402
Endocardial cushion defect	1225	11403
Single ventricle	1218	11404
Hypoplasia of left ventricle	1217	11405
Hypoplasia of right ventricle	1232	11406
Hypertrophy of left ventricle	1214	11407
Hypertrophy of left auricle	1224	11408

	<u>ICD-77</u> <u>Codes</u>	<u>Recodes</u>
Cor biloculare	1212	11409
Patent ductus arteriosus	1215	11410
Atrial situs inversus	1220	11411
Levocardia	1219	11412
Dextrocardia	1236	11413
Atrial septal defect	1216	11414
Atrioventricular canal	1226	11415
Ventricular septal defect	1210	11416
Ostium primum defect	1233	11417
Stenosis of mitral valve	1211	11418
Bifid mitral valve	1234	11419
Atresia of tricuspid valve	1231	11420
Bicuspid aortic valve	1235	11421
Coarctation of aorta	1239	11422
Aortic stenosis	1221	11423
Right aortic arch	1237	11424
Stenosis of pulmonary artery	1213	11425
Coarctation of pulmonary artery	1227	11426
Transposition of great vessels	1228	11427
Tortuosity of carotid	1238	11428
Anomalous venous return	1223	11429
Arteriovenous fistula	1230	11430
Tetralogy of Fallot	1222	11431

	<u>IDC-77 Codes</u>	<u>Recodes</u>
<u>Alimentary Tract</u>		
Tracheo-esophageal fistula	0972	11501
Duplication of esophagus	1347	11502
Duplication of stomach	1348	11503
Gastric situs inversus	1341	11504
Pyloric stenosis	1329	11505
Meckel diverticulum	1337	11506
Retroverted cecum	1334	11507
Megacolon	1328	11508
Hirschsprung disease	1345	11509
Malrotation	1332	11510
Visceral perforation	1331	11511
Abdominal situs inversus	1336	11512
Inguinal hernia	1321	11513
Umbilical hernia	1322	11514
Epigastric hernia	1323	11515
Abdominal hernia	1386	11516
Paraduodenal hernia	1387	11517
Femoral hernia	1385	11518
Scrotal hernia	1324	11519
Rectal fistula	1339	11520
Preternatural anus	1343	11521
Imperforate anus	1342	11522

	<u>ICD-77 Codes</u>	<u>Recodes</u>
<u>Liver and Spleen</u>		
Liver situs inversus	1404	11551
Biliary atresia	1400	11552
Agenesis of spleen	1403	11553
<u>Genitourinary</u>		
Hypospadias	1502	11601
Epispadias	1517	11602
Hypoplasia of penis	1505	11603
Absent testes	1506	11604
Undescended testes, bilateral	1501	11605
Intraabdominal testes	1599	11606
Hypoplasia of testes	1518	11607
Fused testes	1590	11608
Hypertrophy of clitoris	1509	11609
Absent vaginal opening	1598	11610
Ectopic vaginal opening	1595	11611
Septate vagina	1592	11612
Bipartite uterus	1591	11613
Urethral opening in clitoris	1593	11614
Absent urethral orifice	1522	11615
Urethral meatal stenosis	1508	11616
Urethral fistula	1597	11617

	<u>ICD-77 Codes</u>	<u>Recodes</u>
Hypertrophy of bladder	1555	11618
Bladder obstruction	1520	11619
Bladder diverticulum	1521	11620
Ectopic ureter	1537	11621
Double ureter(s)	1539	11622
Ureteral stenosis	1540	11623
Ureterocele	1538	11624
Hydroureter, megaloureter	1536	11625
Hydronephrosis	1535	11626
Absent kidney	1556	11627
Ectopic kidney	1564	11628
Bifid kidney	1558	11629
Double kidney	1559	11630
Enlarged kidney	1554	11631
Hypoplastic kidney	1560	11632
Horseshoe kidney	1561	11633
Cystic kidney	1551	11634
Deformity of calyx	1565	11635
<u>Tumors</u>		
Glioma	1609	11701
Astrocytoma	1623	11702
Neuroblastoma	1657	11703

	<u>ICD-77</u> <u>Codes</u>	<u>Recodes</u>
Ganglioneuroma	1655	11704
Retinoblastoma	1611	11705
Neurofibroma	1625	11706
Intramedullary tumor	1637	11707
Mass, spine	1640	11708
Melanoma	1653	11709
Lipoma, back and other sites	1602	11710
Lipoblastoma	1630	11711
Fibrous angioma	1647	11712
Fibroma	1619	11713
Fibrosarcoma	1661	11714
Eosinophilic granuloma, eye	1646	11715
Hygroma	1633	11716
Epithelioma	1617	11717
Intraabdominal mass	1634	11718
Hepatoblastoma	1658	11719
Wilms tumor	1642	11720
Rhabdomyosarcoma	1648	11721
Osteochondroma	1644	11722
Teratoma, ovary	1651	11723
Papilloma, various sites	1603	11724
Polypoid adenoma, rectum	1650	11725

	<u>ICD-77</u> <u>Codes</u>	<u>Recodes</u>
<b>Cyst</b>		
parotid	1601	11726
thyroglossal duct	1643	11727
Esophageal	1641	11728
Bronchiogenic	1613	11729
Ovarian	1660	11730
Subarachnoid	1659	11731
 <b><u>Skin</u></b>		
Cavernous hemangioma	1802	11751
Hypertrophic hemangioma	1811	11752
Cystic hemangioma	1827	11753
Orbital hemangioma	1828	11754
Lack of subcutaneous fat	1809	11755
Alopecia	1814	11756
Epidermolysis bullosa simplex	1820	11757
Ichthyosis congenita	1824	11758
Ichthyosis hystrix gravior	1818	11759
Ichthyosis vulgaris	1823	11760
Keratosis punctata	1819	11761



<u>Malformation Syndromes</u>	<u>IDC-77 Codes</u>	<u>Recodes</u>
Achondroplasia	1927	11801
Adrenogenital	1902	11802
Cleidocranial dysostosis	1912	11803
Congenital ectodermal dysplasia	1915	11804
Crouzon	1934	11805
Deletion of short arm of D chromosome	1930	11806
de Lange	1922	11807
Down	1900	11808
Dwarfism NOS	1936	11809
Ehlers-Danlos	1941	11810
First arch	1938	11811
Horner	0442	11812
Klinefelter	1947	11813
Klippel-Feil	1939	11814
Laurence-Moon-Biedl	1924	11815
Male Turner	1943	11816
Marfan	1903	11817
Moebius	0430	11818
Mosaicism 46XX/47XX C+	1931	11819
Mosaicism 46XX/47XX G+	1932	11820
Osteogenesis imperfecta	1929	11821

	<u>IDC-77 Codes</u>	<u>Recodes</u>
Poland	1915	11822
Prader-Willi	1913	11823
Robin	1906	11824
Scimitar	1914	11825
Sphenoidal fissure	0437	11826
Straight back	1944	11827
Sturge-Weber	1940	11828
Testicular feminization	1923	11829
Translocation of chromosomes 1 and 2	1937	11830
Tuberous sclerosis	1946	11831
Turner XO	1901	11832
Turner mosaic XO/XX	1926	11833
von Recklinghausen	1905	11834
Waardenburg	1920	11835
Wolff-Parkinson-White	1916	11836
<u>Endocrine and Metabolic</u>		
Albinism	2016	11851
Albinism, partial	2013	11852
Fibrocystic disease of pancreas	2010	11853
Goiter	2027	11854
Hand-Schüller-Christian disease	2038	11855
Homocystinuria	2020	11856
Hurler syndrome	1908	11857

	<u>IDC-77 Codes</u>	<u>Recodes</u>
<u>Infection</u>		
Congenital rubella syndrome	2106	11901
Congenital toxoplasmosis syndrome	2107	11902

## II. MINOR MALFORMATIONS

### Central Nervous System and Related Skeletal

Frontal bossing	0535	21051
Bony protuberance of skull	0541	21052
Palpable sutures (ridging)	0542	21053
Pilonidal sinus	0546	21054

### Musculoskeletal

Polydactyly	0615	21171
Syndactyly	0616	21172
Clinodactyly	0637	21173
Abnormal fingers or toes	0633	21174
Abnormal deviation of fingers or toes	0627	21175
Contractures of fingers or toes	0634	21176
Webbing of fingers or toes	0657	21177
Hammer toes	0628	21178
Hyperextensible joints	0640	21179
Abduction of heel	0635	21180

	<u>ICD-77 Codes</u>	<u>Recodes</u>
Accessory navicular bone	0561	21181
Prominent sacrum	0654	21182
<u>Eye</u>		
Irregular slant of eye(s)	0713	21226
Nasolacrymal duct stenosis	0708	21227
Pterygium	0709	21228
Persistent pupillary membrane	0719	21229
Heterochromia	0728	21230
Blue sclerae	0722	21231
Irregular iris border	0712	21232
Anisocoria	0711	21233
Irregular pupil shape	0717	21234
Conjunctival cyst	0721	21235
Fistula in eye region	0735	21236
<u>Ear</u>		
Low set ears	0800	21276
Large protruding ears	0809	21277
Asymmetric ears	0806	21278
Deformed ear pinna	0801	21279
Branchial arch anomaly	0802	21280

	<u>IDC-77</u> <u>Codes</u>	<u>Recodes</u>
Accessory ear lobe	0810	21281
Preauricular skin tag	0805	21282
<u>Upper Respiratory Tract and Mouth</u>		
Saddle nose	0957	21326
Asymmetric nares	0969	21327
Deviation of nasal septum	0961	21328
Deformity of maxillary arch	0912	21329
Asymmetric palate	0910	21330
Cleft uvula	0901	21331
Malformed teeth	0933	21332
Missing teeth	0934	21333
Supernumerary teeth	0935	21334
Gum hyperplasia	0936	21335
Gum hypoplasia	0937	21336
Cleft gum	0903	21337
Short frenulum	0963	21338
Macroglossia	0964	21339
Geographic tongue	0965	21340
Asymmetric tongue	0966	21341
<u>Liver and spleen</u>		
Accessory spleen	1405	21576

	<u>ICD-77 Codes</u>	<u>Recodes</u>
<u>Genitourinary</u>		
Chordee	1503	21676
Phimosis	1514	21677
Double urethral meatus	1515	21678
Undescended testis, unilateral	1500	21679
Testicular torsion	1513	21680
Hydrocele	1553	21681
Absent or hypoplastic labia	1516	21682
Labial fusion or adhesions	1511	21683
Imperforate hymen	1512	21684
Retrocaval ureter	1542	21685
Double collecting system	1563	21686
Malrotated kidney	1557	21687
Supernumerary kidney	1562	21688
<u>Tumors</u>		
Granuloma annulare	1604	21735
Xanthoma	1607	21736
Hemangio-endothelioma	1654	21737
Vascular tumor	1629	21738
Xanthelasma palpebrarum	1639	21739
Chalazion	1620	21740
Histiocytoma	1621	21741
Tendon sheath tumor	1622	21742

	<u>ICD-77 Codes</u>	<u>Recodes</u>
<b>Polyp, various sites</b>	1627	21743
<b>Cyst</b>		
Baker	1608	21744
Bone	1610	21745
Dermoid	1618	21746
Epidermal inclusion	1612	21747
Penile	1614	21748
Sebaceous	1605	21749
NOS, various sites	1615	21750
<b><u>Skin</u></b>		
Strawberry/portwine hemangioma	1800	21776
Hairly pigmented nevus	1803	21777
Lymphangioma	1805	21778
Telangiectasia, various sites	1810	21779
Supernumerary nipples	1813	21780
Café au lait spots	1806	21781
Vitiligo	1812	21782
Hyperpigmentation	1815	21783
Acanthosis nigricans	1822	21784
Hyperkeratosis	1817	21785
Scalp defect	1830	21786

	<u>ICD-77</u> <u>Codes</u>	<u>Recodes</u>
White forelock	1825	21787
Anal skin tag	1826	21788
<u>Malformation syndromes</u>		
Marcus Gunn phenomenon	0435	21841





## W6 CEREBRAL PALSY DIAGNOSIS

This file was created by the NINCDS staff under the supervision of Dr. Karin B. Nelson MD. It categorizes the CP diagnosis 1) by type of cerebral palsy; e.g. hemiparesis, spastic diplegia, 2) by severity; e.g. suspect, moderate, severe, and 3) by the three time frames when the diagnosis could have been noted: 1-year examination, interim information between 1 and 7 years or 7-year examination.

Extensive effort went into this work file. A hand review of patient charts was undertaken verifying, abstracting and documenting supportive data from the One Year Neurological Examination (PED-11), Summary of the First Year of Life After the Duration Summarized on PED-8 (PED-12), 7 Year Neurological Examination (PED-76), Interdisciplinary Diagnostic Code (ADM-86; IDC-77) and other supportive evidence in the form of reports from the study facility, other hospitals, clinics and physicians.

The rates for diagnosis of Cerebral Palsy in the NCPP, the number of cases by diagnostic category, and other aspects of cerebral palsy at age 7 based on this work file are discussed in:

Nelson, KB, JH Ellenberg, 1978. Epidemiology of Cerebral Palsy. Adv. Neurol. 19:421-45.

### WORK FILE CHARACTERISTICS

This work file contains 53,251 records representing the children born to the women participating in the project between 1959 and 1966. Each record is 80 characters in length. This file is available on 1600 bpi 9 track tape with 8000 characters per block.

TABLE OF DATA ITEMS

Cerebral palsy diagnosis DATA CARD		FROM	TO	DATA ITEM NAME
ITEM ID	NUM			
6257.....M-6	1	5		Card number ("90401")
6258.....M-6	6	14		NINDS case number
6259.....M-6	15	17		Cerebral palsy; paresis, hemi, left (1 yr, interim, 7 yr); CHILD, GENERAL, DIAGNOSIS & CONDITIONS
6260.....M-6	18	20		Cerebral palsy; paresis, hemi, right (1 yr, interim, 7 yr); CHILD, GENERAL, DIAGNOSIS & CONDITIONS
6261.....M-6	21	23		Cerebral palsy; paresis, mono, arm, left (1 yr, interim, 7 yr); CHILD, GENERAL, DIAGNOSIS & CONDITIONS
6262.....M-6	24	26		Cerebral palsy; paresis, mono, arm, right (1 yr, interim, 7 yr); CHILD, GENERAL, DIAGNOSIS & CONDITIONS
6263.....M-6	27	29		Cerebral palsy; paresis, mono, leg, left (1 yr, interim, 7 yr); CHILD, GENERAL, DIAGNOSIS & CONDITIONS
6264.....M-6	30	32		Cerebral palsy; paresis, mono, leg, right (1 yr, interim, 7 yr); CHILD, GENERAL, DIAGNOSIS & CONDITIONS
6265.....M-6	33	35		Cerebral palsy; paraparesis (1 yr, interim, 7 yr); CHILD, GENERAL, DIAGNOSIS & CONDITIONS
6266.....M-6	36	38		Cerebral palsy; quadriplegia (1 yr, interim, 7 yr); CHILD, GENERAL, DIAGNOSIS & CONDITIONS
6267.....M-6	39	41		Cerebral palsy; quadriplegia, other (1 yr, interim, 7 yr); CHILD, GENERAL, DIAGNOSIS & CONDITIONS
6268.....M-6	42	44		Cerebral palsy; ataxia (1 yr, interim, 7 yr); CHILD, GENERAL, DIAGNOSIS & CONDITIONS
6269.....M-6	45	47		Cerebral palsy; diplegia, atonic (1 yr, interim, 7 yr); CHILD, GENERAL, DIAGNOSIS & CONDITIONS
6270.....M-6	48	50		Cerebral palsy; dyskinesia (1 yr, interim, 7 yr); CHILD, GENERAL, DIAGNOSIS & CONDITIONS
6271.....M-6	51	53		Facial palsy (1 yr, interim, 7 yr); CHILD, GENERAL, DIAGNOSIS & CONDITIONS
6272.....M-6	54	56		Brachial plexus palsy (1 yr, interim, 7 yr); CHILD, GENERAL, DIAGNOSIS & CONDITIONS
6273.....M-6	57	59		Cerebral palsy; maledroit (1 yr, interim, 7 yr); CHILD, GENERAL, DIAGNOSIS & CONDITIONS
6274.....M-6	60	62		Cerebral palsy, mixed (1 yr, interim, 7 yr); CHILD, GENERAL, DIAGNOSIS & CONDITIONS
6275.....M-6	63	65		Cerebral palsy; hypotonic (1 yr, interim, 7 yr); CHILD, GENERAL, DIAGNOSIS & CONDITIONS
6276.....M-6	66	66		Spasmus nutans, 1 yr; CHILD, 1 YEAR, DIAGNOSIS & CONDITIONS
6277.....M-6	67	67		Cerebellitis, acute, interim; CHILD, GENERAL, DIAGNOSIS & CONDITIONS
6278.....M-6	68	68		Cerebral palsy, progressive disease, any spec; CHILD, GENERAL, DIAGNOSIS & CONDITIONS
6279.....M-6	69	69		Cerebral palsy; triplegia, 7 yrs; CHILD, 7 YEAR, DIAGNOSIS & CONDITIONS

TABLE OF DATA ITEMS

Cerebral palsy diagnosis			DATA CARD		DATA ITEM NAME	
ITEM ID	NUM	FROM	TO			
6280.....M-6		70	70	Cerebral palsy, other, 1 yri	CHILD, 1 YEAR, DIAGNOSIS &	
				CONDITIONS		
6281.....M-6		71	71	Cerebral palsy, other, 7 yri	CHILD, 7 YEAR, DIAGNOSIS &	
				CONDITIONS		
6282.....M-6		72	72	Cerebral palsy, review status at 1 yr	(chart, PED-12): CHILD, 1	
				YEAR, DIAGNOSIS & CONDITIONS		
6283.....M-6		73	73	Cerebral palsy, acquired, any spec:	CHILD, GENERAL, DIAGNOSIS	
				& CONDITIONS		
6284.....M-6		74	74	Neurological examination completed, 1 yri	CHILD, 1 YEAR,	
				NEUROLOGICAL EXAM		
6285.....M-6		75	75	Neurological examination completed, 7 yri	CHILD, 7 YEAR,	
				NEUROLOGICAL EXAM		
6286.....M-6		76	80	Blank		

Definition of Codes  
Cerebral Palsy Diagnosis (Nelson Edit)  
Card 90401

<u>Field No.</u>	<u>Field Name</u>	<u>Cols.</u>
1.	<u>Card Number</u> Code: 90401	1-5
2.	<u>NINDS #</u>	6-14
3.	<u>C.P. Diagnosis, Hemiparesis - Left</u> Three digit code for:  <u>1 Year Diagnosis (col. 15)</u> 0 - Normal 1 - Suspect 2 - Slight 3 - Moderate 4 - Severe 9 - Unknown  <u>Interim (1-7 yr.) Diagnosis (col. 16)</u> 0 - Normal on review 1 - Suspect 2 - Slight 3 - Moderate 4 - Severe 9 - Unknown or no review  <u>7 yr. Diagnosis (col. 17)</u> 0 - Normal 1 - Suspect 2 - Slight 3 - Moderate 4 - Severe 8 - Dead 9 - Unknown	15-17
4.	<u>C.P. Diagnosis, Hemiparesis - Right</u> Same as in field 3	18-20
5.	<u>C.P. Diagnosis, Monoparesis - Left Arm</u> Same as in field 3	21-23

<u>Field No.</u>	<u>Field Name</u>	<u>Cols.</u>
6.	<u>C.P. Diagnosis, Monoparesis - Right Arm</u> Same as in field 3	24-26
7.	<u>C.P. Diagnosis, Monoparesis - Left Leg</u> Same as in field 3	27-29
8.	<u>C.P. Diagnosis, Monoparesis - Right Leg</u> Same as in field 3	30-32
9.	<u>C.P. Diagnosis, Paraparesis</u> Same as in field 3	33-35
10.	<u>C.P. Diagnosis, Quadriplegia: Diplegia</u> Same as in field 3	36-38
11.	<u>C.P. Diagnosis, Quadriplegia: Other</u> Same as in field 3	39-41
12.	<u>C.P. Diagnosis, Ataxia</u> Same as in field 3	42-44
13.	<u>C.P. Diagnosis, Atonic Diplegia</u> Same as in field 3	45-47
14.	<u>C.P. Diagnosis, Dyskinesia</u> Same as in field 3	48-50
15.	<u>Facial Palsy</u> Same as in field 17	51-53
16.	<u>Brachial Plexus</u> Same as in field 17	54-56

---

May 14, 1974

<u>Field No.</u>	<u>Field Name</u>	<u>Cols.</u>
17.	<u>Maladroit</u> Three digit code for: <u>1 yr. Diagnosis</u> (col. 57) 0 - Absent 1 - Present 9 - Unknown  <u>Interim (1-7 yr. Diagnosis)</u> (col. 58)  0 - Absent 1 - Present 9 - Unknown  <u>7 yr. Diagnosis</u> (col. 59) 0 - Absent 1 - Present 9 - Unknown	57-59
18.	<u>Mixed C.P. Diagnosis</u> <u>Col. 60</u> (1 yr.) 0 - No more than one of columns 15,18,21,24, 27,30,33,36,39,42,45,48 with other than 0 or 9 1 - Any code 1-4 in one or more of columns 15,18,21,24,27,30,33,36,39,45; and any code 1-4 in one or more of columns 42,48; and highest code attained in the two groups of columns is 1 2 - Any code 1-4 in one or more of columns 15,18,21,24,27,30,33,36,39,45; and any code 1-4 in one or more of columns 42,48; and highest code attained in the two groups of columns is 2 3 - Any code 1-4 in one or more of columns 15,18,21,24,27,30,33,36,39,45; and any code 1-4 in one or more of columns 42,48; and highest code attained in the two groups of columns is 3 4 - Any code 1-4 in one or more of columns 15,18,21,24,27,30,33,36,39,45; and any code 1-4 in one or more of columns 42,48; and highest code attained in the two groups of columns is 4 9 - Unknown	60-62

Field No.

Field Name

Cols.

Col. 61 (Interim)

- 0 - No more than one of columns 16,19,22,25,28,31,34,37,40,43,46,49 with other than code 0 or 9
- 1 - Any code 1-4 in one or more of columns 16,19,22,25,28,31,34,37,40,46; and any code 1-4 in one or more of columns 43,49; and highest code attained in the two groups of columns is 1
- 2 - Any code 1-4 in one or more of columns 16,19,22,25,28,31,34,37,40,46; and any code 1-4 in one or more of columns 43,49; and highest code attained in the two groups of columns is 2
- 3 - Any code 1-4 in one or more of columns 16,19,22,25,28,31,34,37,40,46; and any code 1-4 in one or more of columns 43,49; and highest code attained in the two groups of columns is 3
- 4 - Any code 1-4 in one or more of columns 16,19,22,25,28,31,34,37,40,46; and any code 1-4 in one or more of columns 43,49; and highest code attained in the two groups of columns is 4
- 9 - Unknown

Col. 62 (7 yr.)

- 0 - No more than one of columns 17,20,23,26,29,32,35,38,41,44,47,50,59 with other than code 0 or 9
- 1 - Any code 1-4 in one or more of columns 17,20,23,26,29,32,35,38,41,47,59; and any code 1-4 in one or more of columns 44,50; and highest code attained in the two groups of columns is 1
- 2 - Any code 1-4 in one or more of columns 17,20,23,26,29,32,35,38,41,47,59; and any code 1-4 in one or more of columns 44,50; and highest code attained in the two groups of columns is 2
- 3 - Any code 1-4 in one or more of columns 17,20,23,26,29,32,35,38,41,47,59; and any code 1-4 in one or more of columns 44,50; and highest code attained in the two groups of columns is 3



<u>Field No.</u>	<u>Field Name</u>	<u>Cols.</u>
	4 - Any code 1-4 in one or more of columns 17,20,23,26,29,32,35,38,41,44,47,50,69; and any code 1-4 in one or more of columns 44,50; and highest code attained in the two groups of columns is 4	
	9 - Unknown	
19.	<u>Hypotonic</u> Same as in field 17	63-65
20.	<u>Spasmus Nutans (1 yr.)</u> Same as in field 17, any column	66
21.	<u>Acute Cerebellitis (Interim)</u> Same as in field 17, any column	67
22.	<u>Progressive Disease (any epoch)</u> Same as in field 17, any column	68
23.	<u>Triplegia (7 yr.)</u> Same as in field 17, any column	69
24.	<u>Other (1 yr.)</u> Same as in field 17, any column	70
25.	<u>Other (7 yr.)</u> Same as in field 17, any column	71
26.	<u>1 yr. Review Status</u> 0 - Chart review 1 - Based on PED 12 only (no chart review)	72
27.	<u>Acquired C.P. Diagnosis (Any Epoch)</u> 0 - Apparently congenital 1 - No C.P. diagnosis (or unknown) 2 - Congenital and acquired 3 - Definite acquired early (one year or less) 4 - Definite acquired late (after one year)	73

NOTE: If any acquired code exists, it refers to all C.P. diagnoses present at any time period.

<u>Field No.</u>	<u>Field Name</u>	<u>Cois.</u>
28.	<u>Completed Examination - 1 Year</u> 0 - PED 11 1 - No PED 11	74
29.	<u>Completed Examination - 7 Year</u> 0 - PED 76 1 - No PED 76 and 7 year outcome known 2 - No PED 76 and 7 year outcome unknown	75



## W7 ABNORMALITIES AT SEVEN YEARS

The Abnormalities at Seven Years work file was created by the NINCDS staff. It contains NINDB case number, race, sex, outcome of the pregnancy, birthweight, 7-year socioeconomic index, number of abnormalities, an indication of whether major malformations at 1 year and at 7 years exist, and indications for the presence of the following abnormalities: 1) cerebral palsy, 2) mental retardation or learning disorders, 3) visual abnormalities, 4) speech or language abnormalities, 5) hearing abnormalities, 6) non-febrile seizures, 7) achievement abnormalities, 8) hyperactivity, or 9) neurological soft signs.

### WORK FILE CHARACTERISTICS

This work file contains 41,869 records; each record is 40 characters in length. The file is available on 1600 bpi 9 track tape with 4000 character blocks.

TABLE OF DATA ITEMS

Abnormalities at seven years		DATA CARD		FROM TO		DATA ITEM NAME
ITEM ID	NUM	FROM	TO	NUM	TO	
6287	.....M-7	1	9			NINDB case number
6288	.....M-7	10	10			Core (0 = presence); CHILD, GENERAL, ADMINISTRATIVE
6289	.....M-7	11	11			Race; CHILD, GENERAL, SOCIOECONOMIC INFO
6290	.....M-7	12	12			Sex; CHILD, GENERAL, PHYSICAL EXAM
6291	.....M-7	13	14			Outcome of study pregnancy; deaths; survivors; MOTHER, GENERAL; SUMMARY
6292	.....M-7	15	18			Birth weight (gms); CHILD, DELIVERY, PHYSICAL EXAM
6293	.....M-7	19	20			Socioeconomic index, at 7 years; CHILD, 7 YEAR, SOCIOECONOMIC INFO
6294	.....M-7	21	21			PED-76 form present; CHILD, 7 YEAR, ADMINISTRATIVE
6295	.....M-7	22	22			PS-30 through PS-36 forms present; CHILD, 7 YEAR, ADMINISTRATIVE
6296	.....M-7	23	25			PED-75 form present; CHILD, 7 YEAR, ADMINISTRATIVE
6297	.....M-7	24	24			PS-40 through PS-45 forms present; CHILD, 7 YEAR, ADMINISTRATIVE
6298	.....M-7	25	27			Teacher intelligence scales, full scale; IQ; CHILD, 7 YEAR, PSYCH EXAM
6299	.....M-7	28	28			Cerebral palsy; CHILD, 7 YEAR, DIAGNOSIS & CONDITIONS
6300	.....M-7	29	29			Mental retardation; CHILD, 7 YEAR, DIAGNOSIS & CONDITIONS
6301	.....M-7	30	30			Learning disorders; CHILD, 7 YEAR, DIAGNOSIS & CONDITIONS
6302	.....M-7	31	31			Visual abnormalities; CHILD, 7 YEAR, VISION
6303	.....M-7	32	32			Speech; languages; CHILD, 7 YEAR, SLH EXAM
6304	.....M-7	33	33			Hearings; CHILD, 7 YEAR, HEARING
6305	.....M-7	34	34			Seizures, non-febrile; CHILD, 7 YEAR, DIAGNOSIS & CONDITIONS
6306	.....M-7	35	35			Achievement (MBDI); CHILD, 7 YEAR, OBSERVATIONS
6307	.....M-7	36	36			Hyperactivity (MBDI); CHILD, 7 YEAR, DIAGNOSIS & CONDITIONS
6308	.....M-7	37	37			Neurological soft signs (MBDI); CHILD, 7 YEAR, NEUROLOGICAL EXAM
6309	.....M-7	38	38			Malformations, major; at 1 year; CHILD, 1 YEAR, MALFORMATIONS
6310	.....M-7	39	39			Malformations, major; at 7 years; CHILD, 7 YEAR, MALFORMATIONS
6311	.....M-7	40	40			Abnormalities, number; CHILD, 7 YEAR, DIAGNOSIS & CONDITIONS

Attachment #1

Tape Layout for 7 Yr Abnormalities File  
(PRB# 707)-Reel # 052719

Variable	Source	Codes	Output Locations
NINDS#	VF locs. 1-9	As given	1-9
Core	VF loc. 17	0=Core Blank=Non-core	10
Race	VF loc 303	1=White 2=Black 3,4,8=Other	11
Sex	VF loc 554	1=Male 2=Female	12
Outcome	VF locs. 1092-1093	00=Liveborn still living 01=Abortion (19 wks. gest. or less) 02=Abortion (PRB review) 03=Mol. 11=Stillbirth (20 wks. gest. or more) 12=Stillbirth (PRB review) 29=Fetal death, time unk. 30=Under 24 hours of age 31=One day 32=Two days 33=Three days 34=Four days 35=Five days 36=Six days 37=Seven days 38=8-27 days 39=Neonatal death, time unk. 40=28 days through 1 yr. 51=1 year - 2 years 52=2 years 1 day - 3 years 53=3 years 1 day - 4 years 54=4 years 1 day - 5 years 55=5 years 1 day - 6 years 56=6 years 1 day - 7 years 57=7 years 1 day - 8 years 58=Over 8 years 59=Child death - time unk. 99=Unknown	13-14

## Attachment #1

Variable	Source	Codes	Output Locations
Birthweight	VF locs. 1095-1098	0001-7400=As given 9999=Unknown	15-18
SEI (7 Year)	Tape #024704 locs. 19-20	00-98=As given 99=Unknown	19-20
<u>Form Present</u>	Tape #s 045686, 045687		
Ped 76	Card 476	1=Form Present	21
PS 30-38	Card 130	Blank=Form not	22
Ped 75	Card 475	present	23
PS 40-45	Card 140		24
7 Year IQ	Card 2130, Cols. 60-62	001-154=As given 888=Inadequate 999=Unknown 777=Below norms	25-27
Cerebral Palsy (CP)	Tape #00948, loc. 61	0=Normal at 7 yrs. 1=Abnormal	28
Mental Retardation Learning Disorders	Tape #'s 018271, 018371, 018914, 018974		29 30
Visual Abnormalities	Tape #004271	1=Presence of any of the specified codes from Ped 77	31
Speech/Language	Tape #046639, Cols. 14 or 15	2	32
Hearing	Cols. 12 or 13	2	33
Non-febrile Seizures	Tape #15460	Cols. 99=1 and Cols. 96 and 97 <u>not</u> =1	34
Achievement (MBD)	Tape #036968, Col.10	1	35
Hyperactivity (MBD)	11	1	36
Neurological Soft Signs (MBD)	12	1	37
Major Malformations (1 Year)	Any code for Major Malformations at 1 year		38
Major Malformations	Any code for Major Malformations at 7 Yrs.		39
Number of Abnormalities	Cols. 28-37, 39	Code 1 in any of these columns	40

## W8 SPEECH, LANGUAGE AND HEARING AT EIGHT YEARS

The Speech, Language and Hearing at Eight Years work file was constructed in the mid 1970s by Frank M. Lassman, Ph.D. and Robert O. Fisch, MD, University of Minnesota under the contract "Analysis of Speech, Language and Hearing Deficits to Facilitate Prevention, Diagnosis and Treatment," N01-NS-4-2326.

This file contains information on 20,137 children. The cohort consists of all children who received the eight year speech, language and hearing examination between the ages of 7 years 10 months and 8 years 2 months, whose race was black or white, and whose sex and socioeconomic index at birth were known.

The file contains NINDB case number, race and sex of the child, and codes describing the analysis of the child's conductive hearing, sensori-neural hearing, speech and language. The codes were normal, impaired, no opinion, and no test. No opinion meant that no definitive assessment of the child's performance was made.

Of the 20,137 children, 1024 were found to have conductive hearing loss, 447 to have sensori-neural hearing loss, 611 to have impaired articulation and 135 to have impaired language.

More information concerning the cohort and analysis based on this file is found in:

Lassman, FM, RO Fisch, DK Vetter, ES LaBenz. 1980. Early Correlates of Speech, Language and Hearing. Littleton, MA: PSG Publishing Co., Inc.

### WORK FILE CHARACTERISTICS

This work file contains 20,137 records; each record is 16 characters in length. The file is available on 1600 bpi 9 track tape with 3200 characters per block.



TARGE OF DATA ITEMS

Speech language and hearing at eight years

DATA CARD	ITEM ID	NUM	FROM	TO	DATA ITEM NAME
	6312.....W-8		1	9	MINDR case number
	6313.....W-8		10	10	Race: CHILD, GENERAL, SOCIOECONOMIC INFO
	6314.....W-8		11	11	Sex: CHILD, GENERAL, PHYSICAL EXAM
	6315.....W-8		12	12	Hearing; conductive: CHLD, 8 YEAR, HEARING
	6316.....W-8		13	13	Hearing; sensori-neural: CHILD, 8 YEAR, HEARING
	6317.....W-8		14	14	Speech; articulation: CHILD, 8 YEAR, SPEECH
	6318.....W-8		15	15	Language production; word identification: CHILD, 8 YEAR, LANGUAGE
	6319.....W-8		16	16	Blank

DEFINITION OF CODES  
SPEECH, LANGUAGE AND HEARING

Columns	Field Name	Codes	Source
1-9	NINDB number		
10	Race	1 = white 2 = black	Variable file, location 303
11	Sex	1 = male 2 = female	Variable file, location 554
12	Conductive hearing	1 = normal 2 = impaired 3 = no opinion 9 = no test	8 Year SLH Index**
13	Sensori-neural hearing	1 = normal 2 = impaired 3 = no opinion 9 = no test	8 Year SLH Index**
14	Speech	1 = normal 2 = impaired 3 = no opinion 9 = no test	PS-44, item 18* card 5140 col. 44-48
15	Language	1 = normal 2 = impaired 3 = no opinion 9 = no test	8 Year SLH Index** and table on next page
16	Blank		

\*Scores for this data item and their meaning:

- 0-29 = abnormal
- 30-43 = undecided
- 44-50 = normal
- blank = index not computed

norms based on the Templin-Darley Standardization.  
Templin, Mildred C., "Norms on a screening test of  
articulation for ages three through eight," Journal of  
Speech and Hearing Disorders 18:323-331, 1953.

mean score at 8 = 47

standard deviation 4.4

\*\*Lassman, FM, RO Fisch, DK Vetter, ES LaBenz. 1980. Early Correlates of  
Speech, Language and Hearing. Littleton, MA: PSG Publishing Co., Inc.  
Appendix 4, Rules for Constructing SLH Indices, pp. 571-596.

Language\*: used indexes 8YR LANGUAGE PRODUCTION  
and 8YR WORD IDENTIFICATION

norms were based on the means and s.d.'s for NCPP sample

WORD IDENTIFICATION\*\*

LANGUAGE  
PRODUCTION

	42 and below	43 thru 62	63 and above	not computed
524 and below	ABNOR	undecided	undecided	missing
525 thru 727	undecided	undecided	undecided	missing
728 and above	undecided	undecided	NORMAL	missing
not computed	missing	missing	missing	missing

Code

Wording in table above

1  
2  
3  
9

Normal  
Abnormal  
Undecided  
Missing

\*Lassman, FM, RO Fisch, DK Vetter, ES LaBenz. 1980.  
Early Correlates of Speech, Language and Hearing.  
Littleton, MA: PSG Publishing Co., Inc. Appendix 4, p. 580.

\*\*Peabody Picture Vocabulary Test (PPVT) raw score;  
data item id is 3474...PS41

## W9 TOXEMIA CLASSIFICATION

The Toxemia Classification work file was created as part of contract NO1-NS-3-2320, "Dynamic Time Trend Analysis ... Toxemia Classification" with Drs. Friedman and Neff, completed in October, 1975.

This file contains toxemia classification, maximum diastolic blood pressure and maximum proteinuria over all prenatal visits, pregnancy outcome and 4-year IQ.

Discussion of finding pertaining to "Toxemia of Pregnancy," based on this file, can be found in:

Friedman, EA and RK Neff, 1977. Pregnancy Hypertension: A Systematic Evaluation of Clinical Diagnostic Criteria. PSG Publishing CO, Littleton, Mass.

In this book, the definitive report for the pregnancy hypertension subject area, the data on toxemia from this file are discussed extensively in relation to the other variables of the NCPP.

Discussion relevant to the file and the findings can also be found in:

Friedman, EA (ed.), 1976. Blood Pressure, Edema, and Proteinuria in Pregnancy. Prog. Clin. Biol. Res. vol. 7, Alan R Liss, New York.

### WORK FILE CHARACTERISTICS

This work file contains 58,806 records, each 20 characters in length. This file is available on 1600 bpi 9 track tape with 12,000 characters per block.

TABLE OF DATA ITEMS

Toxemia Classification DATA CARD		FROM	TO	DATA ITEM NAME
ITEM ID	NUM			
6320.....W-9		1	9	WINDR case number
6321.....W-9		10	10	Toxemia classification code: MOTHER, PRENATAL, DIAGNOSIS & CONDITIONS
6322.....W-9		11	13	Blood pressure, diastolic, maximum: MOTHER, PRENATAL, PHYSICAL EXAM
6323.....W-9		14	14	Proteinuria; urine; albumin, maximum: MOTHER, PRENATAL, CLINICAL LAB
6324.....W-9		15	16	Outcome of current pregnancy: Deaths; survivors: MOTHER, GENERAL, SUMMARY
6325.....W-9		17	19	IQ: CHILD, 4 YFAP, PSYCH EXAM
6326.....W-9		20	20	Blank

Toxemia Classification File  
 (Contract #N01-NS-3-2320)  
 Drs. Friedman & Neff

<u>Variable No.</u>	<u>Identification</u>	<u>Columns</u>	<u>Code</u>
1	NINDB Number	1-9	Nine-digit number for patient identification: As given
2	Toxemia Classification [Source: Friedman & Neff, Sixth Progress Report of Contract N01-NS-3-2320]	10	
	DBP $\geq$ 95 mm. Hg and no proteinuria or DBP $\geq$ 95 mm. Hg and trace protein- uria		1
	DBP $\geq$ 85 plus proteinuria $\geq$ 1+		2
	DBP $<$ 85 and proteinuria $\geq$ 2+		3
	DBP $<$ 65 and no proteinuria		4
	Normal		5
	Unknown		6
3	Diastolic Blood Pressure Maximum Over All Visits [Source: Card 0344]	11-13	010-200 - As given 999 - Unknown
4	Proteinuria Maximum Over All Visits [Source: Card 0344]	14	0- None 1- 1+, 30 mgs., slight 2- 2+, 40-100 mgs. 3- 3+, 150-350 mgs., moderate 4- 4+, 600-1000 mgs., severe 5- Positive - unqualified 7- Trace, less than 30 mgs. 8- Questionable 9- Unknown
5	Outcome: Deaths and Survivors [Source: VF locs. 1092-1093]	15-16	00= Liveborn, still living 01= Abortions (19 wks. gest. or less) 02= Abortion (PRB Review) 03= Mole 11= Stillbirth (20 wks. gest. or more) 12= Stillbirth (PRB Review) 29= Fetal Death- Type Unknown 30= Under 24 hours of age 31= One day 32= Two days

<u>Variable No.</u>	<u>Identification</u>	<u>Columns</u>	<u>Code</u>
			33= Three days 34= Four days 35= Five days 36= Six days 37= Seven days 38= 8-27 days 39= Neonatal death, time unk. 40= 28 days through 1 year 51= 1 year-2 years 52= 2 years, 1 day- 3 years 53= 3 years, 1 day- 4 years 54= 4 years, 1 day- 5 years 55= 5 years, 1 day- 6 years 56= 6 years, 1 day- 7 years 57= 7 years, 1 day- 8 years 58= over 8 years 59= Child death, time unk. 99= Unknown
6	4 year IQ [Source:VF locs. 514-516]	17-19	025-175= As given 999= Unknown
7	Padding Character	20	Blank

## W10 RUPTURE OF MEMBRANES

The Rupture of Membranes work file was created by the NINCDS staff to correct one field on the variable file, the interval rupture of membranes to birth. This file contains the correctly computed interval from rupture of membranes to birth. THE COMPARABLE VARIABLE FILE DATA ITEMS, 6162....VAR AND 6163....VAR ARE INCORRECTLY CALCULATED AND SHOULD NOT BE USED.

This file is a collection of information available on the master or variable files plus a computed value. Information from the master file includes date and time of birth, and date and time of rupture of the membranes. Information from the variable file includes demographic data; race and sex, labor data; duration of each stage, and delivery data; type, weeks gestation, and outcome.

### WORK FILE CHARACTERISTICS

This work file contains 49,188 records; each record is 60 characters in length. This file is available on 1600 bpi 9 track tape with 6000 characters per block.



TABLE OF DATA ITEMS

Rupture of membranes DATA ITEM ID		DATA CARD NUM	FROM	TO	DATA ITEM NAME
6327	...W-10		1	9	WINDR case number
6328	...W-10		10	10	RACE: CHILD, GENERAL, SOCIOECONOMIC INFO
6329	...W-10		11	11	SEX: CHILD, GENERAL, PHYSICAL EXAM
6330	...W-10		12	17	Birth date (mo/day/yr): MOTHER, DELIVERY, EVENT
6331	...W-10		18	20	Birth time (hr/min): MOTHER, DELIVERY, EVENT
6332	...W-10		21	21	Delivery; method: MOTHER, DELIVERY, PROCEDURE
6333	...W-10		22	23	Gestation at delivery (wks): CHILD, DELIVERY, MEDICAL HISTORY
6334	...W-10		24	25	Apgar, total, 5 minute: CHILD, DELIVERY, PHYSICAL EXAM
6335	...W-10		26	26	Apgar, total, 5 minute, classified: CHILD, DELIVERY, PHYSICAL EXAM
6336	...W-10		27	27	Blank
6337	...W-10		28	31	Labor, duration of first and second stages (hrs/min): MOTHER, INTRAPARTUM, EVENT
6338	...W-10		32	32	Labor, duration of first and second stages (coded): MOTHER, INTRAPARTUM, EVENT
6339	...W-10		33	34	Outcome of current pregnancy; deaths; survivors: MOTHER, GENERAL, SUMMARY
6340	...W-10		35	35	Outcome of current pregnancy; deaths; survivors (grouped): MOTHER, GENERAL, SUMMARY
6341	...d-10		36	36	Labor, duration of first stage (coded): MOTHER, INTRAPARTUM, EVENT
6342	...W-10		37	38	Labor, duration of second stage (coded): MOTHER, INTRAPARTUM, EVENT
6343	...W-10		39	44	Rupture of membranes, date first noted (mo/day/yr): MOTHER, INTRAPARTUM, EVENT
6344	...W-10		45	48	Rupture of membranes, time first noted (24 hr clock): MOTHER, INTRAPARTUM, EVENT
6345	...W-10		49	52	Rupture of membranes to birth, interval, computed (hrs/min): MOTHER, INTRAPARTUM, EVENT
6346	...W-10		53	60	Blank

DEFINITION OF CODES  
RUPTURE OF MEMBRANES

Columns	Field Names	Codes	Source
1-9	NINDB Number		Variable file location 1-8
10	Race	1 = white 2 = negro 3 = oriental 4 = Puerto Rican 8 = other 9 = unknown	Variable file location 303
11	Sex	1 = male 2 = female 3 = undetermined 9 = unknown	Variable file location 554
12-17	Date of Birth	As given	PED-1, card 1401, loc. 15-20
18-20	Time of Birth	Blank - delivered elsewhere As given, based on 24-hr clock 9999 - not reported	PED-1, card 1401, loc. 26-29
21	Type of Delivery	0 = not applicable 1 = vertex 2 = breech 3 = c/s 9 = unknown	Variable file location 1303
22-23	Weeks gestation at delivery	00 - lost to study 01-50 - as given 51,99 - unknown	Variable file location 1101-1102
24-25	Five minute Apgar score	00-10 - as given 20-29 - as given, based on incomplete data 99 - unknown	Variable file location 568-569
26	Group Interval Code	1 = score 0-3 2 = score 4-6 3 = score 7-10 4 = incomplete score 9 = unknown	Variable file location 570
28-31	Total Duration of Labor (1st and 2nd stages)	0000 = none 0001-9959 = as given 9999 = unknown	Variable file location 1437-1440
32	Group Interval Code	0 = no labor 1 = 4 hrs or less 2 = 5-8 hrs 3 = 9-12 hrs 4 = 13-20 hrs 5 = 21-36 hrs 6 = 37-72 hrs 7 = 73 hrs or more 9 = unknown	Variable file location 1441

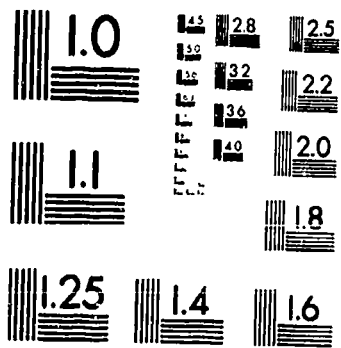
DEFINITION OF CODES  
RUPTURE OF MEMBRANES

Columns	Field Names	Codes	Source
33-34	Outcome	00 = liveborn still living 01 = abortion (19 weeks gest. or less) 02 = abortion (PRB Review) 03 = mole 11 = stillbirth (20 weeks gest. or more) 12 = stillbirth (PRB Review) 29 = fetal death - type unknown 30 = under 24 hrs of age 31 = 1 day 32 = 2 days 33 = 3 days 34 = 4 days 35 = 5 days 36 = 6 days 37 = 7 days 38 = 8-27 days 39 = neonatal death, time unknown 40 = 28 days through 1 year 51 = 1 year - 2 years 52 = 2 years 1 day - 3 years 53 = 3 years 1 day - 4 years 54 = 4 years 1 day - 5 years 55 = 5 years 1 day - 6 years 56 = 6 years 1 day - 7 years 57 = 7 years 1 day - 8 years 58 = over 8 years 59 = child death, time unknown 99 = unknown	Variable file location 1092-1093
35	Group Interval Code	1 = (codes 01,02,03,11,12,29) fetal death 2 = (codes 30-39) neonatal death 3 = (codes 00,40,50-59) survived neonatal 9 = unknown	Variable file location 1094
36	Duration, 1st stage of labor	0 = no labor 1 = 4 hrs or less 2 = 5-8 hrs 3 = 9-12 hrs 4 = 13-20 hrs 5 = 21-36 hrs 6 = 37-72 hrs 7 = 73 hrs or more 9 = unknown	Variable file location 1426
37-38	Duration, 2nd stage of labor	00 = no 2nd stage 01 = less than 5 min 02 = 5-10 min 03 = 11-15 min 04 = 16-20 min 05 = 21-25 min 06 = 26-30 min 07 = 31-35 min 08 = 36-50 min 09 = 51-59 min 10 = 60 min or more 99 = unknown	Variable file location 1431-1432

DEFINITION OF CODES  
RUPTURE OF MEMBRANES

<u>Columns</u>	<u>Field Names</u>	<u>Codes</u>	<u>Source</u>
39-44	Date of Rupture	Blank - not reported As given - based on 24 hr clock 99 = time unknown 0000 or 000000 = not applicable	Card 0337, columns 51-56
45-48	Time of Rupture	Blank - not reported As given - based on 24 hr clock 99 = time unknown 0000 or 000000 = not applicable	Card 0337, columns 57-60
49-52	Interval - rupture of membranes to birth		Computed





MICROCOPY RESOLUTION TEST CHART  
NATIONAL BUREAU OF STANDARDS  
STANDARD REFERENCE MATERIAL 1010a  
(ANSI and ISO TEST CHART No 2)

CONTINUED ON NEXT FICHE