



THE NATIONAL ARCHIVES OF THE UNITED STATES

LITTERA  
SCRIPTA  
MANET

★ 1934 ★

AUTHOR INDEX

93

ALEPA FP	555	BILEK MK	111, 112
ALSTON FK	198	113, 114	
ALVESALO L	168	BISHOP EH	25
AMBRUS CM	1	BLANC WA	450
AMBRUS JL	1	BLAW ME	527
ANDERSON RB	2	BLUMENTHAL H	468
ANDERSON VE	342, 432	BOGGS TR	26, 461
ANDERSON-HUNTINGTON RB	3	DONATI-PELLIE C	58
477		BORDLEY JE	27
ANTHONY BF	523	BRACKBILL Y	28, 29
ASHWORTH MR	55, 131	BRESKY PA	134
AURAND S	77, 343	BRISCOE CC	25
BABSON SG	4, 5	BRODY JE	30
BAILEY SM	158, 159	BROMAN SH	31, 32
176		33, 34, 35, 36, 37	
BALOW B	479	38, 39, 40, 340, 341	
BANAS JS	310	342, 409, 433, 454, 466	
BASZYNSKI AJ	333, 354	484, 561	
BELL JA	498	BROSS IDJ	1
BENIRSCHKE K	6	BROWN J	271, 459, 460, 461
BENSON RC	9, 10, 142, 510	BURCH PTJ	41
BERENDES VM	7, 9	BUTLER DV	42, 96
10, 11, 12, 13, 14		106, 107, 194, 229, 230	
15, 16, 17, 18, 19		231, 232, 255, 236	
20, 21, 22, 23, 53		CASLAN B	43
54, 55, 80, 81, 82		CARLETON JH	55, 143
196, 261, 309, 311, 440		CARTER J	523
441, 442, 444, 450, 483		CASTELLANO GA	498
510, 543			
BERG C	24		

5272 - 093

## AUTHOR INDEX

CATALANO LP JR 96, 141	44, 45	COPLAN J	63
CEREGHINO JJ	464, 526	CORRIDON L	496
CHANG PN	111, 112	COMETT RM	64
CHASE A	47, 48	CUNNINGHAM DG	65
CHEN TC	141, 291	CUSHNER IM	66
292, 293	435, 495	DAHROUGE D	135
CHEZ RA	384	DALESSIO DJ	67
CHI JO	49	DALLAS J	68
CHOATE MCLS	69, 70	DAVIS OD	108
CHRISTIAN JC	301, 302	DEBARD AS	111
CHUNG CS	50, 51	de la BURDE <sup>1</sup> B	69, 70 71, 72, 73, 335, 336
332, 509		DENHOFF E	74, 75
CHURCHILL JA	52, 53	521	
54, 55, 56, 247, 248		DENNO DJ	76, 77
333, 334, 471		343	
CLARK WM JR	4, 9	DEPUE RH	78
229, 309, 510		DEUTSCHBERGER J	9, 10
CLARKSON QD	96, 232	23, 197, 255, 410, 441	
234, 236		442, 483, 510, 543	
CLARREN SK	57	DeVAULT S	245
CLERGET-DARPOUX F	58	DIETZMAN DE	282
CLIFFORD SM	59, 60	DIXON JB	385
450		DOOLING EC	49, 193
COCHRAN HD	314	DORSEN FMCF	108
COHEN BH	61, 462	DOUGLAS RG	450
463		DRAGE JS	81, 82, 83, 209, 386 390, 443, 450, 451, 481 523
COHEN MM	279, 280		
281, 459, 460, 461			
COLE PE	159, 177		
COLLIGAN RC	62		

DRISCOLL SG 142, 151  
 268  
 DRORBAUGH JE 60, 84  
 109, 252  
 EASTMAN NJ 550  
 EDMONDS D 492, 495  
 EHRHARDT AA 85, 86  
 306, 307  
 ELIN RJ 101  
 ELIZAH TS 87  
 ELLENBERG JH 38, 89  
 90, 91, 92, 240, 241  
 411, 412, 413, 414, 415  
 416, 417, 418, 419, 420  
 421, 422, 423, 424, 425  
 426, 427, 428, 492, 493  
 ELLIOTT J 93  
 ELLISON RC 223  
 ENGEL R 95, 96, 97, 98, 99  
 100, 233, 237  
 ENGEL RR 101, 113  
 115  
 FABIYI A 87  
 FALKNER F 102, 166  
 175  
 FAY HK 98, 99, 103, 96, 97  
 106, 107, 234, 480 104, 105  
 FEINLEIB M 223  
 FELDMAN JF 86  
 FERRISS OS 108, 518  
 FIEDLER MF 109, 110  
 561, 562  
 FISCH RO 113, 114, 115, 111, 112  
 270, 522  
 FISCHER L 1  
 FISHER PD 81, 139  
 FLEISHMAN J 1  
 FLICK OL 116, 518  
 FORT AT 117  
 FRAZIER TH 26  
 FREEMAN JM 118, 243  
 297  
 FRENCH KS 337  
 FRIEDMAN EA 119, 120  
 121, 122, 123, 124, 125  
 126, 127, 128, 129, 130  
 131, 132, 133, 134, 135  
 276, 387, 444, 445, 446  
 447, 448  
 FROENLICH LA 87, 136  
 137, 138, 139, 140, 144  
 145, 146, 147, 148, 149  
 150, 151, 310  
 FUCCILLO DA 44, 141  
 251, 493, 494  
 FUJIKURA T 8, 136  
 137, 138, 139, 142, 143  
 144, 145, 146, 147, 148  
 149, 150, 151, 152, 153  
 GARN SH 154, 155  
 156, 157, 158, 159, 160  
 161, 162, 163, 164, 165  
 166, 167, 168, 169, 170  
 171, 172, 173, 174, 175  
 176, 177, 178, 179, 180  
 181, 182, 183, 184, 185  
 186, 187, 188, 189, 269

## AUTHOR INDEX

GARRISON RJ	223	HANSON JH	200, 201
GATES MJ	190, 191	HARDY JB	203, 204, 205, 206, 207, 208, 209, 210, 211, 212, 213, 214, 215, 216, 217, 218, 219, 291, 292, 293, 296, 311, 450, 462, 463, 481, 486, 497, 551, 552
GERALD PS	279, 280	HARDY MP	210, 220
GILKESON MR	211, 212	HARDY WD	210
218, 242, 310, 493, 494		HARKNESS HL	388
495, 496, 497, 500		HARLIN RS	117
GILLES FH	49, 192	HARD S	504
193, 273		HARTZ SC	226, 315, 504, 508, 515
GITHICK OL	429	516	221, 222
GOFFEY B	194, 230	HARVEY MAS	57, 200
231, 232, 235, 236		HAVLIK RJ	223
GOLDSMITH MH	193	HECHT F	281, 459, 460, 461
GORBACH AG JR	469	HEINONEN OP	224, 225, 226, 227, 228, 250, 315, 504, 505, 506, 507, 508, 514, 515, 516
GORDON M	196, 197	HENDERSON JR	519
290, 449, 450, 451		HENDERSON NH	194, 229, 230, 231, 232, 233, 234, 235, 236
GOTTESMAN II	195, 465	HERBST AL	237
GRAUBARD BI	261	HERSH SP	528
GRAVEM HJ	115, 254	HIRTZ DO	88, 238
522		239, 240, 241	
GREEN M	157, 198		
GRISANTI OC	85, 307		
GROSSMAN JH III	499		
GROUSE LD	199		
GUIRE KE	178		
HACKETT ER	108		
HAINSHORTH ML	75		
HAINSHORTH PK	75		

HOBEL CJ	523	JENSEN DR	257
HOEKELMAN RA	242	JOHNSON LD	45, 141
HOFF K	160, 161	JOHNSTON M	163, 164
	162	173	
HOFFMAN LS	292	JONES KL	254
HOLDEN KR	243, 297	JONES MS	285, 286
HOLDEN RH	244, 245	JOSHI OB	553
	246, 285, 286, 521, 569	JUDGE D	396
HOLLEY WL	247, 248	KAGAN J	219
HOBLER IM	249	KANGAS J	5
HOOK EB	227, 250	KANTOR AG	196, 442
HOOPER DB	445, 446	KATZ SN	223
	447, 448	KAUFMAN DW	505, 506
HOROWITZ SL	168	507, 514, 517	
HORROBIN JM	112	KAUFMAN N	589
HORYA-BARBOSA L	251	KEATING MT	165, 166
HOUSLER M	140	269	
HUBBELL JP	252	KEMPER TL	259
HUEDNER RJ	498, 501	KENNEDY C	82, 83
HUISCHER HA	249	567	
HUSTENLOCHER PR	253	KENRHY WA	39, 40
IDANPAAN-HEIKKILA J	504	KESSEL SS	261
INCE SE	86	KIM MS	483
IRETON H	254	KIMBERLING NJ	279, 280
ISRAEL SL	25, 255	281, 459, 460, 461	
JACKSON FC	23, 209	KISSANE JM	389
	459, 452, 483, 549, 550	KLATSKIN EH	260
JAYALAKSHMI P	256	KLEBANOFF MA	261, 262

## AUTHOR INDEX

KLEIN AM	519	LEY AC	495, 496	87, 494
KLIONSKY B	152, 153	LILLIER AA		274
KOLATA GB	263	LINDEMANN SJ		234
KORONES SB	264, 265	LIPKO H		441, 442
311, 496		LIPSITT LP		450, 540
KRAMER A	174	LITTLE WA		275, 276
KRANITZ MA	266	LIVINGSTON S		277
KROLL BH	122, 123	LOBL M		278
124, 125, 126		LUDS HA	281, 459, 460, 461	279, 280
KURENT JE	267	MACKENZIE J		543
LABENZ ES	270, 270	MADDEN DL		282, 429
LABENZ PJ	270, 457	MAN EB	285, 286, 287	283, 284
LADYS B	590	MARDE CC		396
LAGA EH	268	MARMOL JG	290, 542	288, 289
LAMB ME	269	MASLAND RL		56
LARSEN JW Jr	499	MATA A		282
LASSMAN FH	270	MATTHEW ED		282
LAUFUS WC	71	MCCABE KD	162, 169, 177, 180, 181, 182, 185, 186, 187, 188, 528	160, 161, 178, 179, 183, 184, 185, 186, 187, 188, 189
LOVELLE M	167	MCCRACKEN OH Jr	291, 292, 293	211, 212
LAHRENCE RA	304	McFALLS Jr JA		294
LEAKE RD	523	McGARRY ME		260
LECOURS AR	259			
LEHNEBERG EH	109			
LEVI NS	271			
LEVINE RL	272			
LEVITON A	195, 273			

McKUSICK VA	462, 463	MUIRHEAD DM Jr	252
MEIJS B	77	MUNRO HN	268
MELLITS EC	61, 66	MURRAY DL	523
212, 213, 214,		MYRIANTHOPULOS NC	50, 51
220, 243, 278,	61, 215, 219	57, 200, 223,	258, 279
296, 297, 462,	220, 243, 278, 286, 285	280, 281, 299,	306, 301
551, 552, 554	463, 481	302, 317, 318,	310, 320
MELNICK H	298, 299	321, 322, 323,	324, 322
500, 301, 302,	338, 339	326, 327, 328,	329, 330
MENDELSON MA	245	331, 332, 333,	334, 335
MERRITT TA	303, 304	336, 337, 338,	339, 340
MEYER MD	305	341, 342, 343,	459, 460
MEYER-DAHLBURG NFL	85, 86	461, 509, 519,	563, 564
306, 307		566	
MILLER HC	308	NACHSHON I	77, 343
MILLER LD	113	NAEYE RL	304, 344
MITCHELL AA	504, 508	345, 346,	347, 348, 349
516		350, 351,	352, 353, 354
MITCHELL SC	309, 310	355, 356,	357, 358, 359
311, 312		360, 361,	362, 363, 364
MODER FL	141	365, 366,	367, 368, 369
MONIF GRO	313, 314	370, 371,	372, 373, 374
MONSON RR	226, 227	375, 376,	377, 378, 379
315, 504, 505,	502, 507	380, 381,	382, 383, 384
508, 510, 515,	516, 517	385, 386,	387, 388, 389
MONTGOMERY LA	43	390, 391,	392, 393, 394
MOODY RL	471	395, 396,	478
MOORE DM	84	NAFTALY N	132
MOORE M	316	NAYLOR AF	56, 397
MOORHEAD P	279, 280	398, 399, 400,	401, 402
460, 461		403, 546, 563,	564
		NEFF RK	127, 128
		129, 135	
		NELSON KD	88, 89
		90, 91, 92,	238, 239
		240, 241, 404,	405, 406
		407, 408, 409,	410, 411
		412, 413, 414,	415, 416
		417, 418, 419,	420, 421
		422, 423, 424,	425, 426
		427, 428,	497, 500

52.1 - 100



## AUTHOR INDEX

NEMORE J	54, 133	PETERS EC	391, 392
NEWMAN SJ	429	PETZOLD AS	163, 164
NICHOLS PL	29, 59	PIETRONSKI M	445, 446
40, 360, 341, 342, 430	431, 432, 433, 434, 435	447, 448	
465, 467		PLATO CC	464, 524
NISHANDE KR	1, 130	PRUCE I	277
131, 132, 133, 196, 436	437, 438, 439, 440, 441	PURCELL RN	282
442, 443, 444, 445, 446	447, 448, 449, 450, 451	REAMES B	72
452, 453, 512, 513, 550		REID DE	469
NO BY-LINE	454, 455	REID HA	290
NUGENT RP	262	RHOADS GO	262
ODELL LM	456	RICE JP	465
OH M	540	RICH H	197, 198
OLEINICK A	547	RIDELLA SA	163, 164
OLIVER JO	457	167, 173, 174, 175	
OSBORNE RH	168, 169	RIEDER RO	466, 467
OVERALL JC	458	468	
OWEN GM	177	ROANE JA	264, 265
PARK J	312	ROBBINS PO	469
PATIL SR	279, 280	ROBINOW M	176
281, 459, 460, 461		ROLFE UT	109
PATTERSON SP	290	ROSENBAUM AL	248, 470
PAULI LL	277	471	
PEEPLES MO	216	ROSENBERG L	222, 226
PENCHASZADEH VB	462, 463	315, 504, 506, 508, 515	
PESICK SD	167, 170	516	
171		ROSENBLATT C	479

ROSENBLITH JF 2, 3  
 472, 473, 474, 475, 476  
 477  
 ROSENTHAL D 466, 468  
 ROSS ID 523, 542  
 ROSS SM 394, 478  
 ROSTAFINSKI M 282  
 RUBIN RA 479  
 SACHTLEBEN MR 130, 131  
 132, 133, 134  
 SACHTLEBEN-MURRAY MR 135  
 SAIJO CH 252  
 SAXEN L 504  
 SAXMAN JH 480  
 SCHAFFER DB 256  
 SCHEIDT PC 481  
 SCHIFF GM 501  
 SCHMIDT EP 110  
 SCHWARZ BK 82, 83  
 SCOTT TFMCH 256, 526  
 SCRIGGINS AL 289, 542  
 SECREST HP 482  
 SEDLIG A 483  
 SELLMANN AH 312, 518  
 SERUNIAN SA 287, 484  
 SEVER JL 87, 141, 211, 212, 217  
 218, 251, 264, 265, 267  
 282, 292, 293, 313, 314  
 429, 485, 486, 487, 488  
 489, 490, 491, 492, 493  
 494, 495, 496, 497, 498  
 499, 500, 501, 502, 503  
 555  
 SHAKHASHIRI ZA 471  
 SHAPIRO IM 73  
 SHAPIRO S 221, 222  
 226, 227, 228, 250, 315  
 450, 504, 505, 506, 507  
 508, 514, 515, 516, 517  
 SHAW HA 177, 178  
 179, 180, 181, 182, 183  
 184, 185, 186, 187, 188  
 189  
 SHIZONO PH 509  
 SHUBECK F 9, 10  
 510  
 SILVERMAN HA 511  
 SINGER JE 453, 512  
 513  
 SISKIND V 221, 504  
 505, 506, 507, 508, 514  
 516, 517  
 SLONE D 221, 222  
 226, 227, 228, 250, 315  
 504, 505, 506, 507, 508  
 514, 515, 516, 517  
 SMITH AC 518  
 SMITH DN 57, 200  
 201, 202, 258, 519  
 SOKOL RJ 520  
 SOLOMONS G 521

## AUTHOR INDEX

SPELLACY MH	522	UPADHYAY Y	538
ST. GEME JH Jr	525	UTTS J	388
STEINBERG FS	464, 524	VAN DEN BERG BJ	539
STERN I	64	VETTER DK	270
STEWART MS	260	VOMR BR	540
STONE DF	443	VOLLMAN RF	289, 290
STRETSBOUTH AP	258	501, 542	
SUNNITT RL	279, 280	VOSBURGH GJ	543
281, 459, 460, 461		WAINRIGHT RL	189, 544
TAFARI N	395, 396	WALLACE SJ	545
TARVER JH	542	WANG MH	526
TERASAKI PI	502	WARBURTON D	400, 401
THIBEAULT DC	423	402, 546	
THOMPSON DJ	525	WARD RN	57
TINING E	254	WARRAM JH Jr	84
TING RY	526, 567	WEINBERGER KM	547
TODARO J	264, 265	WEINTRAUB DH	1
TORRES F	527	WEISS H	7, 9
TORREY EF	528	10, 21, 22, 23, 82	
TOUBIN A	529, 530	442, 450, 453, 483, 510	
531, 532, 533, 534, 535		543, 548, 549, 550	
536		WELCHER DH	219, 266
TRAUB RO	44, 494	271, 278, 316, 551, 552	
554		554	
TUCKER SH	256	WENDER P	468
TUFTS E	537	WESSEL KH	552
TZAN N	291, 496	WESTPHAL MC	512, 441
ULSTROM R	110	445, 446, 447, 448, 451	
		512, 413, 553	
		NETZEL KM	554

WHITE LR 503, 555  
 WHITEHOUSE D 556  
 MILLERMAN I 246, 403  
     557, 558, 559, 560, 561  
     562, 563, 564  
 WILLIAMS SN 220  
 WOLFF SM 565  
 WOODF CM 566  
 YAKOVLEV PI 259  
 YANG DC 567  
 YANKAUER A 568  
 YARNICK D 496  
 YAZBARK FE 569

0 SORTMK03 REALLOCATED IN CYLINDERS  
 0 SORTMK02 REALLOCATED IN CYLINDERS  
 0 SORTMK01 REALLOCATED IN CYLINDERS  
 0 BLOCKSET TECHNIQUE SELECTED  
 0 --- CONTROL STATEMENTS/MESSAGS

5740-SM1 REL 6.0 ----- 17.11.01 MAY 23. 1985 -----

SORT FIELDS=C0037,004,20,A1  
 RECORD TYPE=I,LENGTH=C05633  
 MAY1500L,GO, INPUT LRECL B 543, TYPE D F  
 0 MAIN STORAGE B (MAX,4096000,1492552), MMAX B 2000  
 0 OPTIONS, SIZE=4096000,MAXLIM=4096000,MINLIM=102400,EQUALS=H,LIST=BY,ERET=RC16,MSODIN=SORTM30  
 0 OPTIONS, VIO=H,EXCPVR=H,RESOUT=NONE,SHP=NO, MKKSEC=H,OUTSEC=BY,VERIFY=H,CHALY=H,DYNALOC=H  
 0 OPTIONS, RESALL=C0152,RESINVC=131072,SVC=C0109,CHECK=BY,HRKREL=BY,OUTREL=H,CKPT=H,STIMER=H  
 0 IN MAIN STORAGE SORT  
 0 INSERT 451, DELETE 451  
 0 RECORDS IN, 0, OUT, 0  
 0 NUMBER OF BYTES SORTED: 244893  
 0 END OF SORT/MERGE

5. - 1.

Abnormalities	61, 200	Age, Children at 1-Year	82
207, 208, 211, 292, 295		97, 257, 410, 413, 469	
317, 320, 497, 500, 555		470, 567	
Abnormalities, Chromosomal		Age, Children at 3-years	96
280, 459, 460, 461		97, 98, 103, 106, 109	
Abnormalities, Electroencephalographic		270, 489, 521	
256, 527		Age, Children at 4-years	1
Abnormalities, Fetal	515	4, 5, 39, 60, 53	
Abnormalities, Neurologic		60, 69, 81, 96, 98	
11, 16, 20, 82, 115		109, 113, 244, 248, 294	
150, 158, 207, 209, 216		285, 410, 470, 473, 477	
246, 250, 275, 285, 353		515, 527, 563, 564, 567	
409, 422, 467, 469, 552		Age, Children at 7-years	52
Abnormalities, Placental	93	49, 67, 60, 62, 74	
352, 352, 355, 357, 362		75, 84, 96, 109, 110	
363, 369, 382, 383, 388		112, 105, 220, 223, 224	
389, 394, 395, 420, 455		230, 231, 232, 233, 234	
Abortion, Spontaneous	314	235, 236, 244, 271, 280	
397, 398, 400, 402		284, 286, 316, 414, 430	
Abortions, Classification of	151	460, 461, 467, 518, 526	
		537, 551, 552, 554	
Abruptio Placentae	349, 352	Age, Children at 8-Months	270
355, 359, 368, 370, 376		26, 42, 246, 246, 270	
387, 388, 428, 442, 444		473, 475, 564	
465, 469		Age, Children at 3 years	27
Academic Performance	74	107, 220, 254, 270, 280	
89, 111, 230		456, 466, 461, 552, 554	
Accidents, Fatal	345	Age, First Year	21
Acetonuria in Pregnancy	53	28, 31, 74, 75	
365, 379, 380, 384		109, 115, 190, 209, 216	
Adolescent, Pregnancy	33	260, 320, 403, 512, 515	
35, 352		421, 527, 537	
Adolescent Mothers	304	Age, Gestational	14
Adoption	111	23, 25, 69, 83, 94	
African City	396	55, 56, 66, 84, 90	
		119, 120, 128, 129, 143	
		149, 151, 168, 170, 182	
		165, 203, 207, 208, 214	
		216, 251, 262, 295, 294	
		305, 309, 348, 350, 354	
		355, 358, 385, 389, 390	
		391, 392, 347, 415, 419	
		453, 462, 463, 475, 481	
		512, 532, 523, 535, 553	

## SUBJECT INDEX

- Age, Maternal 23, 119  
 214, 255, 278, 280, 286  
 290, 319, 368, 398, 400  
 402, 441, 442, 465, 466  
 447, 448, 501, 526, 541  
 550, 553
- Age, School 70, 89  
 100
- Alcohol Syndrome, Fetal 258
- Alcoholism, Maternal 258
- Altitude 305
- American Caucasians 496, 566
- American Negroes 524, 566
- Amniotic Fluid Infections 353  
 350, 344, 349, 350, 353  
 354, 355, 356, 359, 360  
 361, 377, 378, 380, 391  
 392, 394, 396, 426, 523  
 539
- Amphetamine 367
- Analgesics 7, 121
- Anencephaly 267
- Anesthesia 7, 9  
 466
- Anesthetics 28, 121
- Animal Models 85, 287
- Anomalies, CNS 50, 51  
 57, 27, 205, 323, 325  
 329, 330, 341, 356, 502
- Anomalies, Congenital 6  
 22, 46, 50, 78, 126  
 137, 138, 139, 209, 212  
 221, 228, 252, 264, 300  
 313, 314, 315, 317, 323  
 324, 325, 326, 327, 331  
 341, 348, 349, 355, 356  
 359, 360, 366, 468, 486  
 487, 498, 504, 505, 506  
 514, 516, 517
- Anoxia 32, 60  
 441, 442, 445, 446, 447  
 448, 514
- Antenatal Exposure 221, 227  
 504, 505, 517
- Anthropology, Physical 157
- Antibodies, Cytotoxic 502
- Antibody Titer 218, 314  
 496
- Anticonvulsant Drugs 24  
 239, 504
- Anticonvulsant Therapy 200  
 404, 405, 415, 454
- Anticonvulsants, Hydantoin 508  
 200, 201, 202, 508
- Antigen, HLA 58
- Anticops, Multiple 498
- Antinauseants 505, 506
- Apgar Scores 9, 11  
 12, 13, 14, 17, 20  
 26, 40, 65, 80, 81  
 82, 83, 84, 101, 132  
 164, 173, 174, 190, 191  
 197, 275, 304, 359, 392  
 415, 416, 418, 422, 436  
 445, 446, 447, 451, 482  
 484, 520, 522, 569
- Apgar Scores, Smoking 163

523 - 11

Aplasia of Sphenoid Wings	328	Bayley Motor Scale	25, 48 42, 53, 54, 130, 150 173, 176, 194, 216, 246 260, 342, 484, 551, 561 562
Apnea, Neonatal	356	Behavior, Female	85, 86
Asphyxia	11, 17 56, 101, 192, 197, 419 436, 439, 451	Behavior, Male	86, 307
Aspirin	514	Behavioral Characteristics	195, 269, 270
Aspirin Exposure in Pregnancy	507, 514, 516	Behavioral Testing of Newborn	474, 475, 476, 477
Asthma, Bronchial, Maternal	196	Bender-Gestalt Test	110, 194 230, 251, 551, 552, 554
Asymmetries, Gyri	49	Benedactin	505
Asymmetries, Morphological	49	Benn Index	170
Attrition Rate	62	Bilirubin	272
Audiometric Screening,	27 472	Bilirubin, Measurement of Free	272
Audiometry	27	Bilirubin, Serum, Neonatal	26, 216, 353, 481
Auditory Memory	270	Bilirubin Toxicity	272, 353 481
Auditory Screening, <i>see cases</i>	210	Birth Defects	227, 228 250, 504, 516
Australian Antigen	429	Birth Defects, Cardiovascular	152, 225, 227, 250, 309 311, 312, 502
Autism	104, 528	Birth Defects, Cardiovascular, Epidemiology of	225
Bacteria, <i>see cases</i>	499	Birth Interval	29
Bayley Meas.	25, 40 42, 54, 130, 150 176, 194, 216, 246 254, 260, 342, 484, 551, 561 562	Birth Order of Twins	569



- Birth Height  
   13, 23, 25, 26, 29, 4  
   30, 53, 54, 66, 80  
   81, 82, 83, 90, 114  
   115, 134, 145, 146, 149  
   150, 162, 168, 171, 174  
   179, 180, 182, 189, 206  
   207, 213, 216, 247, 248  
   261, 266, 278, 287, 295  
   296, 305, 354, 385, 393  
   399, 419, 442, 443, 444  
   445, 446, 447, 448, 452  
   453, 462, 463, 483, 505  
   507, 512, 517, 522, 543  
   544, 546, 549, 550, 553
- Birth Height, Low 41, 59  
   64, 84, 113, 183, 209  
   214, 279, 309, 437, 451  
   452, 458, 479, 481, 492  
   493, 496, 525
- Birth Heights In Twins 162
- Birthweight, Maternal 261
- Blacks, Nutrition 154
- Bleeding During Pregnancy 276, 466, 528
- Blood Group Incompatibility, Maternal-Fetal 61, 502
- Blood Lead 73
- Blood Pressure 223
- Blood Pressure In Pregnancy 119, 120, 129, 351, 372, 373
- Body Measurements 170, 171  
   174, 179, 184
- Brain, Fetal 11, 20  
   49, 192, 532, 533, 534
- Brain, Rubella 259
- Brain Damage, Fetal 273, 298  
   436, 441, 531
- Brain Development 193, 302  
   306
- Brain Dysfunction, Minimal 34, 74, 430, 435, 536  
   538, 534
- Brain Dysfunction, Neonatal 390, 536
- Brain Stem Injury, Neonatal 529, 530
- Brain Weight 148
- Brain Weight, Low 259
- Branchial Cleft Malformations 299, 331
- Breech Delivery 23, 126  
   529
- Bronchial Asthma, Maternal 196
- Buccoliquinal 169
- Bureau of the Census, U.S. 337
- Butanol-Extractible Iodine (BEI), Serum 283
- Cancer, Testicular 78
- Carcinoma in Situ(CIS) 45  
   141
- Cardiovascular Birth Defects 152, 225, 227, 250, 309  
   311, 312, 502
- Cardiovascular Malformations, Epidemiology of 225
- Caucasian Dermatoglyphics 464

Caucasians, American 566	496	Child Death	221
Central Nervous System (CNS) Damage 198, 473, 529, 532, 534 556		Child Growth Deficiency	258
Central Nervous System (CNS) Infection	491	Child Length 410	189, 213
Central Nervous System (CNS) Malformations 57, 87, 205, 323, 325 329, 330, 341, 356, 502		Child Maltreatment	224, 226
Cerebral Hemorrhage	52, 530 535	Children, Disadvantaged	219
Cerebral Hypoxic Lesions	531	Children, Inner-City 219, 220, 462, 463, 526 552	73 526
Cerebral Lesions	192	Children, Preschool	27
Cerebral Palsy 12, 52, 56, 16, 17 88, 90, 92, 209, 243 297, 409, 414, 415, 416 418, 419, 420, 422, 439 443, 520, 521, 531, 532 533		Children At One-Year of Age 52, 97, 257, 410, 411 469, 470, 567	
Cerebral Palsy, Classification of	411	Children at 5-Years of Age 96, 97, 98, 103, 106 109, 270, 480, 521	
Cerebral Palsy, Epidemiology of	414	Children at 4-Years of Age 1, 4, 5, 39, 40 53, 60, 69, 81, 96 98, 109, 113, 244, 246 284, 285, 410, 470, 473 477, 513, 527, 563, 564 567	
Cervical Canalization	141	Children at 7-Years of Age 32, 41, 47, 60, 62 76, 75, 84, 96, 109 110, 112, 165, 220, 223 229, 230, 231, 232, 233 234, 235, 236, 244, 271 280, 284, 286, 316, 414 430, 460, 461, 467, 518 526, 537, 551, 552, 554	
Cervical Dilatation-Time Curves	122, 123	Children at 8-Months of Age 26, 42, 244, 246, 470 473, 475, 564	
Cervix	45, 369	Children at 8-Years of Age 27, 107, 220, 234, 270 280, 456, 460, 461, 552 554	
Cervix, Incompetent	12, 438		
Cesarean Section	7, 9		
Channelization, Canalization	156		

## SUBJECT INDEX

- Chlordiazepoxide 221
- Chorangioma 139, 140
- Chorioamnionitis 146, 350  
369, 391
- Chorioangioma 139, 140
- Chorion Type 300
- Chorionic Somatomammotropin,  
Human 102
- Chorionic Veins 153
- Chromosomal Abnormalities  
280, 459, 460, 461
- Chromosomal Polymorphisms 281
- Chromosomes 279
- Circummarginate Placenta 8
- Circumvallate Placenta 8
- Classification of  
Cerebral Palsy 411
- Classification of  
Malformations 51, 323
- Cleft Malformations,  
Branchial 299, 331
- CNS Damage 3, 32  
198, 472, 529, 532, 534  
556
- CNS Development 84, 284  
287
- CNS Infection 491
- CNS Malformations 50, 51  
57, 87, 205, 323, 325  
329, 330, 341, 356, 502
- Cognitive Ability 77, 219  
239, 419
- Cognitive Development 34  
77, 269
- Coitus 237, 262  
361, 365, 366, 369, 370  
377, 378, 389, 394, 539
- Collaborative Perinatal  
Project (NICPP) 15, 16  
21, 22, 36, 79, 205  
266, 275, 288, 294, 318  
337, 349, 401, 443, 450  
457, 482, 497, 511, 548  
568
- Collaborative Perinatal  
Project Problems 16  
548
- Collaborative Study, Johns  
Hopkins 68, 203  
204, 210, 211, 313
- Complement-Fixation Tests 498
- Computer Analysis of Labor  
122, 121, 124, 125, 126
- Confluence Modul 29
- Congenital Deafness 210, 283  
472
- Congenital Heart Disease 152  
225, 227, 250, 309, 311  
312, 502
- Congenital Heart Disease,  
Epidemiology of 225
- Congenital Heart Disease,  
Incidence of 311, 312
- Congenital Hypothyroidism 519  
522

- Congenital Infections 291  
   391, 503
- Congenital Malformations 6  
   22, 46, 50, 78, 136  
   137, 138, 139, 209, 212  
   221, 228, 252, 264, 300  
   313, 314, 315, 317, 323  
   324, 325, 326, 327, 331  
   341, 348, 349, 355, 356  
   359, 360, 366, 468, 486  
   487, 488, 504, 505, 506  
   514, 516, 517
- Congenital Malformations, Incidence Of 50, 137  
   331
- Congenital Malformations, Risks of 51, 331
- Congenital Marrow Dysfunction 547
- Congenital Nystagmus 256
- Congenital Pneumonia 391
- Congenital Rubella 44, 46  
   87, 204, 207, 208, 211  
   217, 218, 251, 259, 292  
   293, 313, 485, 488, 489  
   490, 491, 497, 500, 503  
   555, 565
- Conjoined Twins 336
- Contraceptives, Oral 227  
   250
- Coproporphyrin Urine Test 71
- Cord, Prolapsed Umbilical 444, 447
- Cord Around Body, Umbilical 522
- Cord Blood Measurements 101
- Correlates, Early Developmental 22  
   32, 39, 40, 130, 194  
   260, 527
- Correlates, Etiologic 312
- Correlates, Intellectual 57  
   68, 245, 254, 439
- Correlates, Neonatal 19  
   32, 39, 42, 95, 97  
   115, 165, 188, 212, 217  
   237, 257, 265, 283, 304  
   313, 360, 392, 440, 445  
   446, 472, 512, 513, 527
- Correlates, Neurological 18  
   66, 230, 471, 556
- Correlates, Perinatal 7  
   48, 93, 116, 136, 137  
   169, 181, 196, 211, 252  
   264, 274, 299, 304, 361  
   403, 434, 441, 442, 448  
   470, 493, 516, 557, 560
- Correlates, Postnatal 299  
   518
- Correlates, Prenatal 39  
   40, 165, 518, 549
- Correlates, Psychological 471  
   1, 75, 100, 283, 471  
   472, 479, 556, 559
- Correlates of Hearing 270
- Correlates of Language 36  
   106, 270
- Correlates of Speech 106  
   270
- Craniofacial 328
- Criminal Behavior, Delinquency 76  
   54

## SUBJECT INDEX

- Cross-Placental Thyroid Activity 64  
 Crown Size 169  
 Crown Size, Epidemiology of 169  
 Cryptorchidism 78  
 Cultural Differences 85  
     219  
 Cultural Influences 85, 116  
 Cytoarchitectonic Maturation 259  
 Cytogenetic Surveys 459, 461  
 Cytomegalovirus (CMV) Antibody 87, 141, 217, 264, 265, 485, 488, 489, 490, 505  
 Cytotoxic Antibodies 502  
 Data Analysis 548  
 Deafness, Congenital 210  
     283, 472  
 Death, Child 221  
 Death, Fetal 61, 127, 128, 129, 209, 319, 327, 347, 351, 360, 449, 468, 510, 529, 531  
 Death, Infancy, Epidemiology of 59, 345  
 Death, Intrapartum Fetal 274  
 Death, Maternal 290  
 Death, Neonatal 2, 7, 10, 11, 12, 13, 23, 36, 80, 82, 83, 145, 146, 149, 152, 209, 252, 309, 314, 318, 319, 327, 347, 351, 356, 359, 360, 385, 415, 437, 444, 449, 458, 468, 483, 500, 529, 530, 531, 532, 535, 553  
 Death Rate, Perinatal 59  
     119, 120, 132, 137, 138, 147, 149, 196, 212, 226, 237, 255, 258, 262, 275, 296, 304, 305, 310, 325, 347, 348, 349, 352, 355, 357, 361, 362, 363, 365, 367, 368, 387, 388, 391, 396, 397, 436, 440, 441, 442, 443, 446, 447, 448, 450, 451, 505, 507, 517, 522, 523, 543, 568, 569  
 Decidual Necrosis 368  
 Delivery, Breech 23, 126  
     529  
 Delivery, Preterm 359  
 Delivery, Type of 7, 9  
     12, 13, 23, 131, 134, 252, 322, 447, 449, 451, 522, 543, 558, 559  
 Delivery Due Dates 358  
 Delivery-Labor Factors 15  
     19, 36, 121, 122, 125, 125, 344, 450, 462, 510  
 Demographic Factors 19, 21  
     22, 51, 129, 169, 196, 209, 212, 274, 289, 294, 337, 390, 443, 471  
 Dental Lead 168  
 Dentition 168

- Dermatoglyphics 300, 464  
     524
- DES Exposure 224
- Development, Cognitive 34  
     77, 269
- Developmental Correlates:  
     Early 22, 32  
     39, 40, 130, 194, 260  
     527
- Diabetes in Pregnancy 50  
     51, 53, 54, 148, 168  
     252, 312, 383, 389, 540
- Diabetes Mellitus 54, 58  
     383, 540
- Diagnosis of Hypertension  
     in Pregnancy 128
- Diamniotic-Dichorionic  
     Placentas 147, 300  
     301, 327
- Dichotomous Responses 257
- Dicyclomine Hydrochloride 505
- Diethylstilbestrol Exposure 224
- Dilatation, Secondary  
     Arrest of 125
- Dilatation-Time Curves,  
     Cervical 122, 123
- Diphenylhydantoin (DPH) 515
- Diplegia, Spastic 55, 56  
     411
- Disability, Motor 409
- Disadvantaged Children 219
- Disease, Hypertensive in  
     Pregnancy 120
- Disease, Tay-Sachs 339
- Disorder, Learning 36, 75  
     105, 435, 465
- Disorders, Neurologic 21  
     24, 36, 75, 416, 440  
     444, 532, 533, 538
- Disorders, Seizure 90, 418  
     421, 422, 427, 520, 556
- Disseminated Intravascular  
     Coagulation 298
- Dizygotic Twins 301, 327  
     396
- Dizygotic Twins,  
     Malformations in 322
- Dominance, Cerebral 343
- Down's Syndrome 282, 312  
     314, 424, 547
- Down's Syndrome, Epidemiology  
     of 495
- Doxylamine Succinate 505
- Draw-e-Perion Test (DAP),  
     Goodenough-Marrie 235  
     271
- Drug Exposure, Fetal 222  
     356
- Drug Exposure, Maternal 79  
     128, 201, 315, 366, 515  
     516
- Drug Exposure, Prenatal 224  
     366
- Drugs, Anticonvulsant 24

- Drugs, Evaluation of 228  
 515, 516, 542
- Drugs In Pregnancy 12, 15  
 79, 224, 227, 228, 270  
 289, 366, 507, 542
- Due Dates, Delivery 358
- Dysfunctional Labor 130, 131  
 132, 133, 134, 197
- Dysmaturity 526
- Dystocia, Mechanical, Fetal 543
- Dystocia, Mechanical, Maternal 543
- Ear Malformations, External 299
- Early Developmental Correlates  
 22, 32, 39, 40, 130  
 194, 260, 527
- Echo-Reaction 104, 105  
 106, 107, 480
- Echolalia 104, 107, 480
- Eclampsia 288
- Edema In Pregnancy 119, 120  
 129
- Education, Parental 337  
 399, 562
- Education, Maternal 18, 81  
 112, 182, 184, 188, 304
- Educational Correlates 479
- EEO Measurements  
 (Electroencephalographic)  
 42, 94, 95, 97, 100  
 108, 233, 257, 527
- Eccentric Speech 103
- Electroencephalographic  
 Abnormalities 256, 527
- Electroencephalographic  
 Measurements (EEO)  
 94, 95, 97, 100, 108  
 233, 257, 527
- Embryo 151, 487
- Embryology 102
- Endemic Colter 283
- Endocardial Fibroelastosis, 310  
 Primary
- Endocardial Fibroelastosis,  
 Primary, Epidemiology of 310
- Environment, Intrauterine 468
- Environmental Factors 69  
 119, 159, 366, 431, 443  
 463
- Epidemiology of Cardiovascular  
 Malformations 225
- Epidemiology of Cerebral Palsy  
 414
- Epidemiology of Crown Size 169
- Epidemiology of Febrile  
 Seizures 91, 199  
 238, 406
- Epidemiology of Infancy Death  
 59, 345
- Epidemiology of Malformations  
 51, 222, 299, 322, 325  
 326, 329, 332

5277 - 118

- Epidemiology of Mongolism 495
- Epidemiology of Primary Endocardial Fibroelastosis 310
- Epidemiology of Rubella 204  
208, 251, 313, 497, 501  
555
- Epidemiology of Skull Defects 328
- Epidemiology of Twins 319
- Epidural Hemorrhage 529
- Epilepsy 201, 239  
243, 297, 320, 405, 412  
413, 414, 427, 504, 508
- Epilepsy, Child 88, 243  
297, 320, 406
- Epilepsy, Maternal 24, 67  
315, 428
- Epilepsy, Parents 320
- Epilepsy, Predictors Of 4:3
- Epilepsy, Siblings 320
- Epistaxis 58
- Erythroblastosis Fetalis, Rh 148, 355
- Erythrocytes, Sickled 144  
153
- Estrogen, Prenatal 86
- Ethnic Differences 252, 325
- Etiologic Correlates 312
- Evaluation, f. Drugs 228, 515  
516, 542
- Examinations, Neurologic 9
- Examinations In (NCCP) Perinatal Project 22  
79, 203, 443
- Examinations of Speech, Language, Hearing (SLH) 103, 270, 457
- Examiners, (SLH), Speech, Language, Hearing 270
- Exercise 30
- Exposure, Antenatal 221, 227  
504, 505, 517
- Exposure, DES 224
- Exposure, Diethylstilbestrol 224
- Exposure, Drug, Fetal 222  
366
- Exposure, Drug, Maternal 79  
128, 201, 315, 366, 515  
516
- Exposure, Drug, Prenatal 224  
366
- Exposure, Lead, Asymptomatic 69, 70
- Exposure, Radiation 509
- Exposure to Narcotics, Prenatal 198
- External Ear Malformations 299
- Extracardiac Malformations 527  
310, 311
- Extrachorial Placenta 8
- Eye-Hand Dominance 116, 343



- Factors, Obstetric 16, 25  
     60, 139, 142, 209, 274  
     289, 290, 351, 401, 438  
     495
- Factors, Perinatal 20, 21  
     62, 109, 112, 116, 127  
     134, 161, 213, 218, 229  
     246, 256, 270, 294, 409  
     466, 528, 537
- Factors, Socioeconomic 36  
     76, 111, 119, 184, 214  
     219, 294, 393, 399, 462  
     466
- Familial 261, 431  
     58, 159
- Family History 103, 482
- Family Income 184, 337  
     399
- Family Size, IQ 29
- Fetal Accidents 345
- Febrile Seizures 63, 89  
     91, 118, 191, 199, 238  
     240, 241, 253, 277, 404  
     405, 406, 407, 408, 412  
     413, 423, 424, 425, 426  
     427, 434, 545
- Febrile Seizures, Epidemiology of 91, 199  
     238, 404
- Febrile Seizures, Treatment of 118, 238, 406
- Female Behavior 85, 86
- Female Sex Hormones 86, 227  
     250
- Fetal, Mechanical Dystocia 543
- Fetal Abnormalities 515
- Fetal Alcohol Syndrome 258
- Fetal Arteries, Unilateral  
     Thickening of 143
- Fetal Brain 11, 20  
     49, 192, 532, 533, 534
- Fetal Characteristics 268
- Fetal Death 61, 127  
     128, 129, 209, 319, 327  
     347, 351, 360, 449, 468  
     510, 529, 531
- Fetal Death, Intrapartum 274
- Fetal Development 160, 300  
     330, 551
- Fetal Disorders 357, 362  
     363, 481
- Fetal Distress 10, 17  
     18, 19, 448
- Fetal Drug Exposure 222, 366
- Fetal Growth Deficiency 202  
     302, 347
- Fetal Growth Retardation 364  
     371, 372, 374, 385, 393  
     455
- Fetal Growth Standards 385
- Fetal Head Position 470, 558
- Fetal Heart Rate (FHR) 10  
     19
- Fetal Hydrantoin Syndrome 200  
     308
- Fetal Hypoxia 11, 346  
     356, 359, 436, 451, 535, 536, 535  
     534, 535 277
- Fetal Maturity 149

Fetal Morbidity	9, 395	Generational Trend, Growth	157
441, 442, 445, 446, 447		Genetic Factors	176, 251, 299
448		1., 15d, 176, 251, 299	
Fetal Outcome	7, 9	326, 330, 333, 334, 339	
20, 61, 66, 80, 117		342, 401, 431, 432, 463	
127, 152, 168, 196, 197		564	
204, 205, 206, 207, 211		Genetic Limitation	219
252, 278, 313, 314, 363		Genetic Load	329, 330
382, 383, 440, 444, 449		Genetic Variation	179, 219
450, 462, 463, 469, 485		223, 301, 302, 434	
503, 510, 525, 543		Geographic Differences	46
Fetal Presentation	126, 447	144	
Fetus	12, 46	Geographic Factors	339, 432
64, 93, 121, 149, 152		Geographic Racial Factors	182
161, 237, 354, 385, 485		Genital Matrix Infarction	531
487, 489, 490, 532, 533		55, 51, 66, 84, 90	
535, 536		119, 120, 128, 129, 143	
FHR, Fetal Heart Rate	10	149, 151, 168, 174, 182	
19		183, 202, 207, 208, 214	
Finger Prints	464, 524	216, 252, 262, 295, 296	
First Year of Life	2, 21	305, 309, 348, 350, 354	
25, 28, 31, 74, 75		355, 358, 385, 388, 390	
109, 115, 190, 209, 216		391, 392, 397, 415, 419	
260, 320, 403, 512, 513		453, 462, 463, 475, 481	
521, 527, 537		512, 532, 533, 535, 553	
Foremna Parietalis Permaena	328	Gestational Age, Prolonged	355
Forceps, Low, Operation	449	Gestational Infarction	264
Free Bilirubin,		Glomerulonephritis, Maternal	119
Measurement of	272	Golfer, Endemi.	283
Full-Term Infants, Undersized	5		
Full-Term Necrotas	5, 108		
533, 538			
Funlitis	350		
Gene-Environment	338, 431		
468			

- Goodenough-Harris Draw-a-  
 Person Test (DAP) 235  
 271
- Gravida, Age 23, 119  
 216, 255, 278, 280, 286  
 290, 319, 368, 398, 400  
 402, 441, 442, 445, 446  
 447, 448, 501, 526, 541  
 550, 553
- Gravida Characteristics 13  
 39, 40, 70, 79, 84  
 128, 137, 142, 197, 214  
 225, 268, 289, 294, 308  
 318, 326, 388, 401, 443  
 450, 452, 461, 462, 463  
 537, 549, 557
- Gravidity 8, 25  
 119, 120, 124, 125, 182  
 214, 252, 255, 276, 352  
 398, 402, 541, 546, 550
- Growth, Determinants Of 157
- Growth, Generational Trend 157
- Growth, Postnatal 102, 156  
 184, 540
- Growth, Prenatal 100, 142  
 367
- Growth Deficiency, Child 758
- Growth Deficiency, Fetal 202  
 308, 347
- Growth Patterns, Physical  
 111, 112, 113, 138, 165  
 179, 184
- Growth Retardation 375, 388
- Growth Retardation, Fetal  
 364, 371, 372, 374, 385  
 393, 455
- Growth Retardation, Placental  
 162, 347, 352, 355, 360  
 368, 387
- Growth Standards, Fetal 385
- Gyri, Asymmetries 49
- Gyrus, Superior Temporal 49
- Gyrus, Transverse Temporal 49
- H-1 Virus 314
- Half Siblings, Malformations  
 1, 526
- Hand-Eye Dominance 116, 343
- Head Circumference 102, 174  
 179, 184, 189, 410
- Head Position, Fetal 470  
 558
- Hearing, Correlates of 270
- Hearing, Loss 27, 270  
 299
- Hearing-Speech-Language  
 Outcome at 3 Years 134  
 513
- Hearing Survey 27
- Heart Disease, Maternal 312  
 440, 441
- Height, Maternal 171, 180
- Hemagglutination Antigen, (HA) 494

- Hemagglutination-Inhibition Test, (HI) 87, 314  
 494, 498
- Hematocrit, Infant 52, 55  
 183, 185
- Hematocrit, Maternal 166  
 174, 175, 177, 178, 490
- Hematocrit, Race Specific Norms 154
- Hemiplegia 412
- Hemoglobin, Infant 183, 185  
 249
- Hemoglobin, Maternal 166  
 174, 175, 177, 178, 181  
 249
- Hemoglobin, Race Specific Norms 154
- Hemorrhage, Cerebral 52  
 530, 535
- Hemorrhage, Epidural 529
- Hemorrhage, Intracranial 409
- Hepatitis 282, 429
- Heredity 156, 159
- Hernias 217
- Hernias, Indirect Inguinal 78, 217
- Heroin Withdrawal 198
- Herpes Simplex 265, 485  
 439, 503
- Herpesvirus Antibody 45  
 264
- High-Risk Registry 27
- Histocompatibility 58
- History, Family 103, 482
- HLA, Antigen 58
- Hormone, Thyroid-Stimulating (TSH) 283, 319
- Hormone Effects, Prenatal 78, 85, 86, 306, 307
- Hormones, Sex, Female 86  
 227, 250
- Hormones, Thyroid 64
- Housing 73
- Housing, Substandard 72
- Human Development 557, 560
- Human Teratogens 57, 201  
 330, 364, 486, 508, 542
- Hyaline Membranes 145, 152  
 523
- Hydanto In Anticonvulsants 200, 201, 202, 568
- Hydantoin Syndrome, Fetal 200, 508
- Hyperactivity 47, 48  
 74, 435, 467
- Hyperbilirubinemia 26, 252  
 272, 353, 392, 481, 538
- Hypermaesemia 101
- Hypertension, Diagnosis in Pregnancy 128
- Hypertension in Pregnancy 119, 127, 128, 129, 168  
 351, 357, 365, 387, 588

52. -1.

- Hypertensive Disease in Pregnancy 120
- Hyperthermia 57
- Hypotension in Pregnancy 127
- Hypothyroidism, Congenital 519
- Hypothyroidism In Pregnancy 168, 284
- Hypothyroxinemic Women 283
- Hypoxia, Intrapartum 11  
346, 356, 359, 436, 451  
532, 534, 535
- Hypoxia, Perinatal 444
- Hypoxic Lesions, Cerebral 531, 533, 536
- IgM Macroglobulin Levels 490  
503
- Immunization, Childhood 63  
240, 241
- Immunization, Seizures and 63, 240, 241
- Immunization During Pregnancy Against Influenza 226
- Immunization During Pregnancy Against Poliomyelitis 226, 515
- Immunoglobulin G Screening (IGG) 212
- Immunoglobulin Levels 61  
205, 212, 291, 292, 293  
295, 486, 496, 503, 555
- Immunoglobulin M Screening, Neonatal 292, 293, 295
- Impairment, Psychomotor 353  
374, 384
- Impairment, Sensory 16, 209  
353
- Incidence of Congenital Heart Disease 311, 312
- Incidence of Congenital Malformations 50, 137
- Incidence of Seizures 190
- Income, Family 184, 337  
399
- Income, Per Capita 177, 178  
180, 182, 185, 187
- Infancy Death, Epidemiology of 59, 345
- Infant Death Syndrome 2  
36, 93, 242, 350, 381  
386, 390
- Infant Development 28, 31  
36, 94, 116, 248, 512  
561
- Infant Infections 2, 380
- Infant Mortality 59, 119  
120, 132, 137, 138, 147  
149, 196, 212, 226, 237  
255, 258, 262, 275, 296  
304, 305, 310, 325, 347  
348, 349, 352, 355, 357  
361, 362, 363, 365, 367  
368, 387, 388, 391, 396  
397, 436, 440, 441, 442  
445, 446, 447, 448, 450  
452, 505, 507, 517, 522  
525, 543, 568, 569
- Infant Seizures 190, 191
- Infant Vocalization 472

- Infants, Full-Term 5, 108  
     535, 538  
 Infants, Mongoloid 289  
 Infants, Preterm 56, 356  
 Infants, Undersized Term 5  
 Infarction, Germinal Matrix 531  
 Infarction, Placental 349  
     351, 359, 366, 367, 393  
 Infarction, Subependymal 535  
 Infection, Central Nervous System (CNS) 491  
 Infection, Gestational 264  
 Infections, Amniotic Fluid  
     30, 344, 349, 350, 353  
     354, 355, 356, 359, 360  
     361, 377, 378, 380, 391  
     392, 394, 396, 426, 523  
     539  
 Infections, Bacterial 499  
     523  
 Infections, Congenital 291  
     391, 503  
 Infections, Infant 2, 380  
 Infections, Intrauterine 30  
     146, 267, 292, 293, 380  
     503  
 Infections, Maternal 485  
     493, 499, 523  
 Infections, Maternal Urinary Tract 273, 357  
     380, 492  
 Infections, Parasitic 499  
     557, 561  
 Infections, Perinatal 205  
     267, 485, 490, 493, 499  
     510, 523  
 Infections, Respiratory Tract 345  
 Infections, Viral, in Pregnancy  
     211, 251, 264, 265, 486  
     487, 488, 489, 490, 499  
     503  
 Influenza A 264, 265  
 Influenza Immunization During Pregnancy 226  
 Inner-City Children 73, 219  
     220, 462, 463, 526, 552  
 Institutional Distributions 125  
 Intellectual Correlates 57  
     68, 445, 254, 439  
 Intellectual Development  
     20, 32, 206, 209, 213  
     221, 446, 340, 341, 342  
     563, 564  
 Intellectual Performance 5  
     89, 197, 208, 229, 248  
     266, 278, 316, 432, 558  
 Intelligence, Maternal 111  
     245, 456  
 Intelligence, Superior 112  
     562  
 Intelligence Measurement 17  
     219, 271, 434  
 Intelligence Test, Stanford-Binet  
     18, 53, 54, 81, 96  
     98, 103, 116, 254, 551  
     557, 561

- Interracial 403, 563  
     564
- Intracranial Hemorrhage 409
- Intrapartum Fetal Death 274
- Intrapartum Hypoxia 11, 346  
     356, 359, 436, 451, 532  
     534, 535
- Intrauterine Environment 468
- Intrauterine Growth 5, 462  
     463
- Intrauterine Infections 30  
     146, 267, 292, 293, 380  
     503
- Intrauterine Malnutrition 150
- Intrauterine Pneumonia 146
- Iodine, Butanol-Extractable (BEI), Serum 283
- IQ  
     36, 69, 70, 76, 18, 19  
     89, 95, 96, 99, 100  
     106, 112, 114, 134, 138  
     150, 191, 207, 214, 219  
     233, 264, 270, 284, 286  
     306, 405, 409, 410, 434  
     451, 454, 505, 517, 528  
     556
- IQ, Family Size 29
- IQ, Low 279, 431  
     39, 233
- IQ, Preschool 40
- IQ Impairment 200, 284  
     353
- IQ In Twins 266, 301
- IQ Tests, 111, 198  
     219, 234, 287, 341, 342  
     434, 466, 552
- IQ Tests, Problems In 219  
     434
- IQ Tests, Validity Of 219
- IQ Variability 301, 560
- Jaundice 272
- Jewish Populations 339
- Johns Hopkins Collaborative Study 68, 203  
     204, 210, 211, 313
- Ketonuria in Pregnancy 53  
     355, 379, 380, 384
- Labor, Computer Analysis of 126
- Labor, Dysfunctional 130  
     131, 132, 133, 134, 197
- Labor, Graphic Diagnosis of 133  
     130, 132, 133
- Labor-Delivery Factors 15  
     19, 36, 121, 122, 125  
     135, 344, 450, 482, 510
- Language, Correlates of 36  
     106, 270
- Language Function 49, 98  
     220
- Language-Hearing-Speech Outcome at 3 Years 134  
     513
- Language Performance 96  
     97, 99, 104
- Language Style, Cultural 219

- Last Menstrual Period (LMP) 358, 553  
 Latency Response, Verbal 480  
 Laterality 343  
 Lead, Dental 73  
 Lead Exposure, Asymptomatic 69, 70  
 Lead in Blood 73  
 Lead Poisoning 71, 72  
 Lead Poisoning, Treatment of 72  
 Leanness 114  
 Learning Disabilities 36  
     75, 105, 435, 465  
 Learning Disorder 36, 75  
     105, 435, 465  
 Left-Right Asymmetries 49  
 Length, Child 189, 213  
     410  
 Lesions, Cerebral 192  
 Leukoencephalopathy 273  
 Light Sensitivity 3  
 Linkage 58  
 LMP, Last Menstrual Period 358, 553  
 Longitudinal Study 275, 294  
 Louisville Twin Study 102  
     434  
 Low Birth Weight 41, 59  
     154, 84, 113, 183, 209  
     214, 270, 309, 437, 451  
     452, 458, 479, 481, 492  
     493, 496, 525  
 Low Brain Weight 259  
 Low IQ 219, 431 39, 233  
 Lung Maturation 523  
 Macrolactulin Levels, IgM 490, 503  
 Male Behavior 86, 307  
 Malformations, (CHS) Central Nervous System 51  
     57, 87, 205, 323, 325  
     329, 330, 341, 356, 502  
 Malformations, Branchial Cleft 299, 331  
 Malformations, Cardiovascular 152, 225, 227, 250, 309  
     311, 312, 502  
 Malformations, Classification of 51  
     323  
 Malformations, Congenital  
     136, 137, 138, 139, 209  
     212, 221, 228, 252, 264  
     300, 313, 314, 315, 317  
     323, 324, 325, 326, 327  
     331, 341, 348, 349, 355  
     356, 359, 360, 366, 468  
     481, 487, 488, 504, 505  
     506, 514, 516, 517  
 Malformations, Congenital, Incidence of 50, 137  
     331  
 Malformations, Congenital, Risks of 51, 331



- Malformations, Epidemiology of  
31, 222, 299, 322, 325  
326, 329, 332
- Malformations, External Ear 299
- Malformations, Extracardiac  
310, 311
- Malformations, Skull 328
- Malformations in  
Dizygotic Twins 322
- Malformations in Half Siblings  
326
- Malformations in Monozygotic  
Twins 322, 328
- Malformations in Siblings 516
- Malformations in Singletons  
322, 324, 332, 338
- Malformations in Twins 321  
322, 324
- Malformations, Skull,  
Epidemiology of 328
- Malignancy, Child 224, 226
- Malnutrition, Intrauterine 150
- Malnutrition, Maternal 391  
396
- Marginal Sinus Rupture, 462  
(MSR)
- Marrow Dysfunction, Congenital  
547
- Maternal, Mechanical Dystocia  
563
- Maternal Age, 23, 119  
214, 255, 278, 280, 286  
290, 319, 368, 378, 400  
402, 441, 442, 445, 446  
447, 448, 501, 526, 541  
550, 553
- Maternal Alcoholism 258
- Maternal Bronchial Asthma 196
- Maternal Characteristics 13  
39, 40, 70, 79, 84  
128, 137, 142, 197, 214  
225, 263, 289, 294, 308  
318, 326, 388, 401, 403  
450, 452, 461, 462, 463  
507, 549, 557
- Maternal Death 290
- Maternal Diabetes 50, 51  
312, 383, 389, 540
- Maternal Education 18, 81  
112, 182, 184, 188, 304
- Maternal Factors 5, 25  
169, 304, 317, 440, 441  
442, 445, 446, 447, 448  
469, 471, 494, 510, 553
- Maternal-Fetal Incom-  
patibility, Blood Group and  
61, 502
- Maternal Heart Disease 312  
440, 441
- Maternal Infections 485, 493  
499, 523
- Maternal Obesity 160, 161  
162, 344
- Maternal Occupation 182, 393
- Maternal Pelvic Size 559

- Maternal Rubella 210, 211  
494, 500, 555
- Maternal Urinary Tract Infections 273, 357  
380, 492
- Maturatation 156, 158
- Mechanical Dystocia, Fetal 543
- Mechanical Dystocia, Maternal 543
- Medicine in Pregnancy 506
- Meconium Staining 152
- Medical Characteristics 270
- Medication, Obstetrical 28  
31, 37, 263
- Medication Toxicity 468
- Megroyprogesterone Acetate, (MPA) 85, 306  
307
- Membranes, Rupture, Premature 84, 305, 344, 349, 359  
369, 392, 510, 523
- Membranes, Intact 391
- Memory, Auditory 270
- Menarche, Age At 156, 157  
167
- Meningitis, Neonatal Bacterial 458
- Mental Deficiency 13, 15  
21, 22, 200, 247, 258
- Mental Development 3, 26  
69, 93, 96, 97, 113  
115, 453, 449, 474, 475
- Mental Retardation 6, 16  
24, 36, 38, 60, 79  
209, 243, 246, 273, 282  
283, 285, 286, 287, 297  
342, 355, 409, 411, 412  
414, 420, 421, 428, 429  
431, 521, 531, 534, 567
- Mental Retardation in Siblings 48
- Mental Scale, Bayley 25  
60, 62, 53, 54, 130  
150, 173, 174, 194, 216  
246, 254, 260, 269, 342  
433, 484, 551, 561, 562
- Meprobamate 221
- Mesiodistal 169
- Methodology, Research 548
- Microcephaly 200, 421
- Minimal Brain Dysfunction 36, 74, 430, 435, 536  
538, 554
- Minor Motor Seizures 412
- Model, Confluence 29
- Models, Animal 83, 287
- Mongolism 282, 312  
314, 429, 547
- Mongolism, Epidemiology of 495
- Mongoloid Infants 289
- Monozygotic Twins 41, 150  
298, 310, 301, 327, 396
- Monozygotic Twins, Malformations in 322  
338

52.22 - 128

## SUBJECT INDEX

- Morbidity, Fetal 9, 395  
 441, 442, 445, 446, 447  
 448
- Morphology, Asymmetrical 49
- Morphometry 268
- Mortality, Child 221
- Mortality, Fetal 61, 127  
 128, 129, 209, 319, 327  
 347, 351, 360, 449, 468  
 510, 529, 531
- Mortality, Maternal 290
- Mortality, Neonatal 2, 7  
 9, 10, 11, 12  
 23, 36, 80, 82, 83  
 145, 146, 149, 152, 209  
 252, 309, 314, 318, 319  
 327, 351, 356, 359  
 360, 385, 415, 437, 444  
 449, 458, 468, 483, 500  
 529, 530, 531, 532, 535  
 553
- Mortality, Perinatal 59  
 119, 120, 132, 137, 138  
 147, 149, 196, 212, 226  
 237, 255, 258, 262, 275  
 296, 304, 305, 310, 325  
 347, 348, 349, 352, 355  
 357, 361, 362, 363, 365  
 367, 368, 387, 388, 391  
 396, 397, 436, 440, 441  
 442, 445, 446, 447, 448  
 450, 452, 503, 507, 517  
 522, 525, 543, 568, 569
- Mothers, Adolescent 304
- Motor Development 3, 26  
 48, 69, 93, 96, 97  
 115, 449, 474, 475
- Motor Disability 409
- Motor-Perceptual Functioning 116
- Motor Scale, Bayley 25, 40  
 42, 53, 54, 130, 150  
 173, 174, 194, 216, 246  
 260, 342, 484, 551, 561  
 562
- Motor Seizures, Minor 412
- Motor Tests 111, 287  
 341
- MPA, Medroxyprogesterone 85, 306  
 307
- MSR, Marginal Sinus 442  
 Rupture
- Multivariate Analysis 525  
 551
- Mumps 264, 265
- Myelination, Delayed 259
- Narcotics, Prenatal, 198  
 Exposure to
- Nausea 505, 506
- NCPP, Collaborative Perinatal 15, 16  
 Project 21, 22, 36, 79, 205  
 246, 275, 288, 294, 318  
 337, 349, 401, 443, 450  
 457, 482, 497, 511, 548  
 568
- NCPP, Examinations in 22  
 79, 203, 443
- Negrees, American 524, 566
- Neonatal Apnea 356
- Neonatal Auditory Screening 210  
 523 - 127
- Neonatal Bacterial Meningitis 458

Neonatal Brachial Paralysis	197	Neonatal Spinal Cord Injury	529, 530	
Neonatal Brain Dysfunction	390, 536	Neonatal Stress	260	
Neonatal Brain Stem Injury	529, 530	Neonates, Full-Term	5, 108	
Neonatal Characteristics	21	533, 538		
Neonatal Correlates	19, 32	Neoplasia	509	
39, 42, 95, 97, 115		Nephrogenic Zone (PNZ)'s	149	
165, 188, 212, 217, 233		Neural Tube Defects	329, 330	
257, 265, 283, 304, 313		331		
360, 382, 440, 445, 446		Neurologic Abnormalities	11	
472, 512, 513, 527		16, 20, 82, 115, 130		
Neonatal Death	2, 7	138, 107, 209, 216, 246		
8, 9, 10, 11, 12		256, 275, 283, 353, 409		
23, 36, 80, 82, 83		422, 467, 469, 552		
145, 146, 149, 152, 209		Neurologic Deficits	21, 22	
252, 309, 314, 318, 319		36, 75, 416, 440, 444		
327, 347, 351, 356, 359		532, 533, 538		
360, 385, 415, 437, 444		Neurologic Disorders	21	
449, 458, 468, 483, 500		22, 36, 75, 416, 440		
529, 530, 531, 532, 535		444, 532, 533, 538		
553		Neurologic Examinations	9	
Neonatal Development	28	567		
31, 36, 94, 116, 248		Neurological Correlates	18	
512, 561		66, 250, 471, 556		
Neonatal Factors	3, 36	Neurological Status	19, 25	
98, 140, 473		34, 55, 115, 116, 196		
Neonatal IgG Screening	212	212, 248, 254, 260, 415		
Neonatal IgM Screening	212	439, 513, 521		
291, 292, 293, 295		Neuropathology	193	
Neonatal Polycythemia	547	Newborn Behavioral Testing	477, 478, 479, 480, 481, 482, 483, 484, 485, 486, 487, 488, 489, 490, 491, 492, 493, 494, 495, 496, 497, 498, 499, 500, 501, 502, 503, 504, 505, 506, 507, 508, 509, 510, 511, 512, 513, 514, 515, 516, 517, 518, 519, 520, 521, 522, 523, 524, 525, 526, 527, 528, 529, 530, 531, 532, 533, 534, 535, 536, 537, 538, 539, 540, 541, 542, 543, 544, 545, 546, 547, 548, 549, 550, 551, 552, 553, 554, 555, 556, 557, 558, 559, 560, 561, 562, 563, 564, 565, 566, 567, 568, 569, 570, 571, 572, 573, 574, 575, 576, 577, 578, 579, 580, 581, 582, 583, 584, 585, 586, 587, 588, 589, 590, 591, 592, 593, 594, 595, 596, 597, 598, 599, 600, 601, 602, 603, 604, 605, 606, 607, 608, 609, 610, 611, 612, 613, 614, 615, 616, 617, 618, 619, 620, 621, 622, 623, 624, 625, 626, 627, 628, 629, 630, 631, 632, 633, 634, 635, 636, 637, 638, 639, 640, 641, 642, 643, 644, 645, 646, 647, 648, 649, 650, 651, 652, 653, 654, 655, 656, 657, 658, 659, 660, 661, 662, 663, 664, 665, 666, 667, 668, 669, 670, 671, 672, 673, 674, 675, 676, 677, 678, 679, 680, 681, 682, 683, 684, 685, 686, 687, 688, 689, 690, 691, 692, 693, 694, 695, 696, 697, 698, 699, 700, 701, 702, 703, 704, 705, 706, 707, 708, 709, 710, 711, 712, 713, 714, 715, 716, 717, 718, 719, 720, 721, 722, 723, 724, 725, 726, 727, 728, 729, 730, 731, 732, 733, 734, 735, 736, 737, 738, 739, 740, 741, 742, 743, 744, 745, 746, 747, 748, 749, 750, 751, 752, 753, 754, 755, 756, 757, 758, 759, 760, 761, 762, 763, 764, 765, 766, 767, 768, 769, 770, 771, 772, 773, 774, 775, 776, 777, 778, 779, 780, 781, 782, 783, 784, 785, 786, 787, 788, 789, 790, 791, 792, 793, 794, 795, 796, 797, 798, 799, 800, 801, 802, 803, 804, 805, 806, 807, 808, 809, 810, 811, 812, 813, 814, 815, 816, 817, 818, 819, 820, 821, 822, 823, 824, 825, 826, 827, 828, 829, 830, 831, 832, 833, 834, 835, 836, 837, 838, 839, 840, 841, 842, 843, 844, 845, 846, 847, 848, 849, 850, 851, 852, 853, 854, 855, 856, 857, 858, 859, 860, 861, 862, 863, 864, 865, 866, 867, 868, 869, 870, 871, 872, 873, 874, 875, 876, 877, 878, 879, 880, 881, 882, 883, 884, 885, 886, 887, 888, 889, 890, 891, 892, 893, 894, 895, 896, 897, 898, 899, 900, 901, 902, 903, 904, 905, 906, 907, 908, 909, 910, 911, 912, 913, 914, 915, 916, 917, 918, 919, 920, 921, 922, 923, 924, 925, 926, 927, 928, 929, 930, 931, 932, 933, 934, 935, 936, 937, 938, 939, 940, 941, 942, 943, 944, 945, 946, 947, 948, 949, 950, 951, 952, 953, 954, 955, 956, 957, 958, 959, 960, 961, 962, 963, 964, 965, 966, 967, 968, 969, 970, 971, 972, 973, 974, 975, 976, 977, 978, 979, 980, 981, 982, 983, 984, 985, 986, 987, 988, 989, 990, 991, 992, 993, 994, 995, 996, 997, 998, 999, 1000	
Neonatal Seizures	209, 243	212, 248, 254, 260, 415		
297, 409		Neurological Status	19, 25	
Neonatal Serum Bilirubin	26	34, 55, 115, 116, 196		
216, 353, 481		212, 248, 254, 260, 415		
		439, 513, 521		
		Neuropathology	193	
		Newborn Behavioral Testing	477, 478, 479, 480, 481, 482, 483, 484, 485, 486, 487, 488, 489, 490, 491, 492, 493, 494, 495, 496, 497, 498, 499, 500, 501, 502, 503, 504, 505, 506, 507, 508, 509, 510, 511, 512, 513, 514, 515, 516, 517, 518, 519, 520, 521, 522, 523, 524, 525, 526, 527, 528, 529, 530, 531, 532, 533, 534, 535, 536, 537, 538, 539, 540, 541, 542, 543, 544, 545, 546, 547, 548, 549, 550, 551, 552, 553, 554, 555, 556, 557, 558, 559, 560, 561, 562, 563, 564, 565, 566, 567, 568, 569, 570, 571, 572, 573, 574, 575, 576, 577, 578, 579, 580, 581, 582, 583, 584, 585, 586, 587, 588, 589, 590, 591, 592, 593, 594, 595, 596, 597, 598, 599, 600, 601, 602, 603, 604, 605, 606, 607, 608, 609, 610, 611, 612, 613, 614, 615, 616, 617, 618, 619, 620, 621, 622, 623, 624, 625, 626, 627, 628, 629, 630, 631, 632, 633, 634, 635, 636, 637, 638, 639, 640, 641, 642, 643, 644, 645, 646, 647, 648, 649, 650, 651, 652, 653, 654, 655, 656, 657, 658, 659, 660, 661, 662, 663, 664, 665, 666, 667, 668, 669, 670, 671, 672, 673, 674, 675, 676, 677, 678, 679, 680, 681, 682, 683, 684, 685, 686, 687, 688, 689, 690, 691, 692, 693, 694, 695, 696, 697, 698, 699, 700, 701, 702, 703, 704, 705, 706, 707, 708, 709, 710, 711, 712, 713, 714, 715, 716, 717, 718, 719, 720, 721, 722, 723, 724, 725, 726, 727, 728, 729, 730, 731, 732, 733, 734, 735, 736, 737, 738, 739, 740, 741, 742, 743, 744, 745, 746, 747, 748, 749, 750, 751, 752, 753, 754, 755, 756, 757, 758, 759, 760, 761, 762, 763, 764, 765, 766, 767, 768, 769, 770, 771, 772, 773, 774, 775, 776, 777, 778, 779, 780, 781, 782, 783, 784, 785, 786, 787, 788, 789, 790, 791, 792, 793, 794, 795, 796, 797, 798, 799, 800, 801, 802, 803, 804, 805, 806, 807, 808, 809, 810, 811, 812, 813, 814, 815, 816, 817, 818, 819, 820, 821, 822, 823, 824, 825, 826, 827, 828, 829, 830, 831, 832, 833, 834, 835, 836, 837, 838, 839, 840, 841, 842, 843, 844, 845, 846, 847, 848, 849, 850, 851, 852, 853, 854, 855, 856, 857, 858, 859, 860, 861, 862, 863, 864, 865, 866, 867, 868, 869, 870, 871, 872, 873, 874, 875, 876, 877, 878, 879, 880, 881, 882, 883, 884, 885, 886, 887, 888, 889, 890, 891, 892, 893, 894, 895, 896, 897, 898, 899, 900, 901, 902, 903, 904, 905, 906, 907, 908, 909, 910, 911, 912, 913, 914, 915, 916, 917, 918, 919, 920, 921, 922, 923, 924, 925, 926, 927, 928, 929, 930, 931, 932, 933, 934, 935, 936, 937, 938, 939, 940, 941, 942, 943, 944, 945, 946, 947, 948, 949, 950, 951, 952, 953, 954, 955, 956, 957, 958, 959, 960, 961, 962, 963, 964, 965, 966, 967, 968, 969, 970, 971, 972, 973, 974, 975, 976, 977, 978, 979, 980, 981, 982, 983, 984, 985, 986, 987, 988, 989, 990, 991, 992, 993, 994, 995, 996, 997, 998, 999, 1000	
		Noncatalastrophic Trauma During Pregnancy	117	
		Nonsmokers	177, 186	
		187, 315, 354, 388		

- Normative Values 189  
 Nuchal Colls. Umbilical Cord 522  
 Nurses 482  
 Nutrition 30, 154  
   156, 157, 159, 166, 170  
   174, 176, 523  
 Nutrition In Pregnancy 187  
   188, 366, 373, 374, 375  
   379, 380, 382, 388, 389  
 Nutritional Surveys 155, 177  
   181, 184  
 Nystagmus 256  
 Nystagmus, Congenital 256  
 Obesity 114, 156  
   157, 162, 540  
 Obesity, Maternal 160, 161  
   162, 344  
 Obstetric Factors 16, 25  
   60, 139, 142, 209, 274  
   289, 290, 351, 401, 438  
   495  
 Obstetric Procedures 12  
 Obstetrical Complications 131  
   8, 10, 13, 84,  
   196, 197, 225, 274, 288  
   368, 383, 401, 418, 439  
   441, 442, 445, 446, 447  
   448, 458, 470, 513, 520  
   522, 529, 530  
 Obstetrical Medication 28  
   51, 37, 263  
 Occiput Anterior Position 470  
   (OA)  
 Occiput Posterior Position 470  
   (OP)  
 Occiput Transverse 126  
 Occult Prolapse of  
   Umbilical Cord 448  
 Occupation, Maternal 182  
   393  
 Occupation, Parental 337  
   399  
 Ocular Disorders 565  
 Ocular Manifestations 565  
 Odontometrics 168  
 Oral Contraceptives 227, 250  
 Organ Height 148  
 Organism In Pregnancy 262, 438  
 Oxygen Diffusion Capacity,  
   Placental 268  
 Oxygen Supply 305  
 Palm Prints 464, 524  
 Paralysis, Neonatal Brachial 197  
 Parasitic Infections 499  
 Parental Education 337, 399  
   562  
 Parental Occupation 337, 399  
 Parents, Schizophrenic 466  
   467, 468  
 Parity 8, 25  
   119, 120, 124, 125, 182  
   214, 252, 255, 276, 352  
   398, 402, 541, 546, 550  
 Paternal Characteristics 51  
   112, 294, 326

- Pathology, Placental 93  
 350, 352, 355, 357, 362  
 363, 369, 362, 383, 388  
 389, 394, 395, 450, 455
- Patient Follow-up 68, 482  
 548
- Peabody Picture Vocabulary  
 Test (PPVT) 107, 456
- Pelvic Size, Maternal 559
- Perceptual-Motor Functioning 116
- Perinatal Correlates 7  
 48, 93, 116, 136, 137  
 169, 188, 196, 211, 252  
 264, 276, 299, 304, 361  
 403, 436, 441, 442, 448  
 470, 495, 518, 557, 560
- Perinatal Death Rate 59  
 119, 120, 132, 137, 138  
 147, 169, 196, 212, 226  
 237, 255, 258, 262, 275  
 296, 306, 303, 310, 325  
 347, 348, 349, 352, 355  
 357, 361, 362, 363, 367  
 367, 368, 387, 388, 391  
 396, 397, 436, 440, 441  
 442, 445, 446, 447, 448  
 450, 452, 505, 507, 517  
 522, 525, 543, 568, 569
- Perinatal Factors 20, 21  
 62, 109, 112, 114, 127  
 156, 161, 213, 218, 229  
 246, 256, 270, 294, 409  
 466, 528, 537
- Perinatal Hypoxia 444
- Perinatal Infections 205  
 267, 485, 490, 493, 499  
 510, 523
- Perinatal Project, Collaborative (NCP) 15  
 16, 21, 22, 36, 79  
 205, 166, 275, 288, 294  
 318, 157, 349, 401, 443  
 450, 157, 482, 497, 511  
 548, 168
- Perinatal Stress Score 62  
 175
- Perinatology 365
- Personal Pronouns 105
- Phenobarbital 481
- Phenothiazines 517
- Phenotypes 460, 461
- Phenytoin 315
- Phlebitis, Umbilical, Acute 391
- Photoc Latency 42, 108
- Phototherapy 481
- Physical Development 206  
 213, 247, 270, 403, 462  
 512, 513
- Physical Growth Patterns 111  
 112, 113, 158, 165, 179  
 184
- Physical Trauma 60
- Pice (paint and plaster) 71
- Pice Prevention 72
- Placenta 143, 146, 152, 30, 136  
 268, 305, 338, 153, 174  
 354, 391, 346, 348
- Placenta, Bipartite 142

523 - 130

- Placenta, Circummarginata 8
- Placenta, Circumvallate 8
- Placenta, Dichorionic 147  
300, 301, 327
- Placenta, Extrachorial 8
- Placenta, Monochorionic 298  
300, 301, 327
- Placenta, Rubella Virus From  
44, 313
- Placenta Previa 352, 359  
370, 376, 444, 466, 469
- Placenta, Abruptio 349, 352  
355, 359, 368, 370, 376  
387, 388, 428, 442, 444  
445, 469
- Placental, Cross, Thyroid 64  
Activity
- Placental Growth Retardation  
162, 347, 352, 355, 360  
368, 387
- Placental Infarction 349  
351, 359, 368, 387, 393
- Placental Oxygen Diffusion  
Capacity 268
- Placental Pathology 93, 350  
352, 355, 357, 362, 363  
369, 382, 383, 388,  
394, 395, 450, 455
- Placental Position 276
- Placental Structural  
Composition 268
- Placental Transfusion 153
- Placental Height 160, 162  
287, 296, 354, 483, 522  
546
- Placental Heights In Twins 102
- Placentation 102, 147
- Placentitis 301
- Pneumonia, Congenital 391
- Pneumonia, Intrauterine 146
- Poisoning, Accidental 79  
537
- Poisoning, Lead 71, 72
- Poliomyelitis Immunization  
During Pregnancy 226  
513
- Polycythemia, Neonatal 547
- Polydactyly 566
- Polymorphisms, Chromosomal 281
- Population Cytogenetics 281
- Populations, Jewish 339
- Potentials, Visual Evoked  
99, 233
- PPVT, Peabody Picture  
Vocabulary Test 107, 456
- Prediction, Cerebral Palsy 92
- Preeclampsia 119
- Pregnancy, Acetonuria 53  
365, 379, 380, 384
- Pregnancy, Adolescent 33  
35, 112

- Pregnancy, Aspirin Exposure in 507, 516, 516
- Pregnancy, Bleeding During 276, 469, 528
- Pregnancy, Blood Pressure In 119, 120, 129, 351, 372, 373
- Pregnancy, Diabetes in 50, 51, 53, 59, 168, 168, 252, 312, 383, 389, 540
- Pregnancy, Diagnosis of Hypertension in 128
- Pregnancy, Drugs In 12, 15, 79, 224, 227, 228, 270, 289, 366, 367, 505, 562
- Pregnancy, Hypertension In 119, 127, 128, 129, 168, 351, 357, 365, 387, 388
- Pregnancy, Hypotension in 127
- Pregnancy, Hypothyroidism In 168, 284
- Pregnancy, Meclizine in 506
- Pregnancy, Noncatastrophic Trauma During 117
- Pregnancy, Nutrition In 187, 188, 366, 373, 374, 375, 379, 380, 382, 388, 389
- Pregnancy, Orqasm In 262, 438
- Pregnancy, Planned 358
- Pregnancy, Proteinuria In 119, 120, 129, 387, 471
- Pregnancy, Rapid Succession 248
- Pregnancy, Risk Factors In 36, 40, 54, 109, 120, 128, 192, 200, 211, 222, 225, 227, 228, 255, 290, 312, 347, 395, 398, 402, 436, 450
- Pregnancy, Risk Patterns In 129
- Pregnancy, Smoking In 41, 47, 48, 51, 65, 93, 161, 164, 180, 182, 183, 185, 186, 187, 188, 213, 215, 303, 305, 344, 345, 348, 354, 362, 364, 366, 369, 371, 374, 376, 379, 382, 388, 389, 390, 453, 492, 523
- Pregnancy, Teenage 33, 35, 167, 375
- Pregnancy, Viral Infections In 46, 87, 211, 251, 264, 265, 486, 487, 488, 489, 490, 499, 503
- Pregnancy, X-Rays During 289, 509
- Pregnancy Due Dates 358
- Pregnancy Registration 21, 358
- Pregnancy Hestage 16
- Premature Rupture Membranes 84, 305, 344, 349, 359, 369, 372, 510, 523

5242-127



## SUBJECT INDEX

- Prematurity  
 15, 25, 29, 1, 14  
 96, 146, 173, 52, 59  
 215, 237, 246, 176, 182  
 262, 309, 340, 252, 255  
 396, 441, 442, 341, 357  
 447, 453, 469, 445, 446  
 500, 510, 529, 479, 492  
 532, 533, 534, 530, 531  
 553
- Prenatal Correlates 39, 40
- Prenatal Drug Exposure 224
- Prenatal Exposure to Narcotics 198
- Prenatal Factors 21, 50
- Prenatal Growth 102, 148
- Prenatal Hormone Effects 78
- Prenatal Progesterone 85
- Preschool, IQ 40
- Preschool Children 27
- Preterm Delivery 359
- Preterm Infants 56, 356
- Primary Endocardial Fibroelastosis 310
- Primary Endocardial Fibroelastosis, Epidemiology of 310
- Problems, Collaborative Perinatal Project 16
- Progesterone, Prenatal 85
- Prolapsed Umbilical Cord 444
- Prolonged Gestational Age 355
- Pronouns, Personal 105
- Proteinuria in Pregnancy 119
- Psychological Correlates 1  
 75, 100, 283, 471, 472  
 479, 556, 559
- Psychological Data 316
- Psychological Factors 235
- Psychological Performance 81, 515, 551
- Psychometric Deficits 62
- Psychomotor Impairment 353
- Psychosexual Differentiation 85, 307
- Psychosis 528
- Pyuria, Maternal 357
- Q and C Banding 279, 460
- Quality Control 16, 270
- Race, Maternal 51, 403, 520, 521  
 456, 544
- Race Specific Standards 39  
 66, 81, 178, 182, 225  
 295, 360, 546, 550, 554

- Racial Differences 8, 19
  - 32, 51, 61, 77, 95
  - 98, 120, 134, 159, 166
  - 169, 177, 178, 181, 182
  - 183, 184, 186, 187, 194
  - 214, 215, 216, 227, 230
  - 231, 232, 233, 234, 235
  - 236, 249, 255, 267, 270
  - 271, 279, 280, 281, 299
  - 301, 316, 322, 327, 341
  - 342, 343, 391, 397, 399
  - 461, 462, 463, 464, 475
  - 483, 484, 523, 43, 553
  - 557, 568
- Racial Factors 23, 50
  - 51, 119, 128, 144, 145
  - 147, 246, 278, 294, 296
  - 332, 398, 400, 401, 410
  - 432, 443, 453, 459, 461
  - 500, 526, 560, 564
- Radial Diffusion Technique 291, 293
- Radiation Exposure 509
- Reading 270
  - 220, 234
- Renal Glomerular Development 149
- Replacement Therapy, Thyroid 284, 287, 519
- Reproduction 400, 443
- Research, Social Science 294
- Research Methodology 548
- Respiratory Distress Syndrome (RDS) 1, 84
  - 84, 113, 115, 252, 333
  - 334, 519, 530
- Respiratory Tract Infections 345
- Retardation, Mental 4, 16
  - 24, 36, 38, 60, 79
  - 207, 243, 244, 273, 282
  - 285, 285, 286, 287, 297
  - 342, 353, 409, 411, 412
  - 414, 420, 421, 428, 429
  - 431, 421, 531, 534, 567
- Rh Erythroblastosis Fetalis 146, 355
- Right-Left Asymmetries 49
- Risk Factors In Pregnancy 120
  - 36, 40, 84, 109, 120
  - 124, 192, 200, 211, 222
  - 225, 227, 228, 255, 290
  - 312, 347, 395, 398, 402
  - 436, 450
- Risk Patterns In Pregnancy 129
- Rubella, Congenital 44, 46
  - 87, 204, 207, 208, 211
  - 217, 218, 251, 259, 292
  - 293, 313, 485, 488, 489
  - 490, 491, 497, 500, 503
  - 555, 555
- Rubella, Epidemiology of 204
  - 206, 251, 313, 497, 501
  - 555
- Rubella, Maternal 210, 211
  - 494, 530, 555
- Rubella, Prevention 208, 251
  - 500
- Rubella Antibody 501
- Rubella Brain 219
- Rubella Epidemic of 1963-1964 44, 251, 465, 500, 565
- Rubella Vaccination 494, 565
- Rubella Virus From Placenta 44, 313

5227 - 1

## SUBJECT INDEX

- Rubella Virus From Throat  
Cultures 44, 313
- RV Virus 314
- Salicylates 514
- Sample Bias 199
- Sample Maintenance 68, 482
- Sample Selection 91, 270  
457
- Sample Size 189
- Schizophrenia 466, 528
- Schizophrenic Parents 466  
467, 468
- School Achievement 430
- School Age 70, 99  
100
- School Progress 236, 479
- Science Research Associates  
(SRA) 245, 456
- Screening, Audiometric 27  
472
- Screening, Speech 109, 472
- Seasonal Variation Factors 365
- Secondary Arrest of Dilatation 125
- Section, Cesarean 7, 9
- Seizure Disorders 90, 337  
421, 422, 427, 520, 556
- Seizures, Afebrile 413, 420  
427
- Seizures, Febrile 63, 89  
91, 118, 191, 199, 238  
240, 241, 253, 277, 404  
405, 406, 407, 408, 412  
413, 423, 424, 425, 426  
427, 454, 545
- Seizures, febrile, Epidemiology of 91, 199  
238, 406
- Seizures, febrile, Treatment of 118, 238  
406
- Seizures, Incidence of 190
- Seizures, Maternal 24, 67  
421, 428
- Seizures, Minor Motor 412
- Seizures, Neonatal 209, 243  
297, 409
- Seizures in Infants 190, 191
- Semantic Resolution 107
- Sensory Impairment 16, 200  
353
- Serologic Diagnosis 498, 500
- Serologic Tests, Maternal 493
- Serological Survey 429, 489
- Serum Bilirubin, Neonatal 26, 216, 353, 481
- Serum Butanol-Extractable Iodine (BEI) 523 - 140  
283
- Sex Characteristics 23, 39  
246, 296, 332, 410, 459

- Sex Differences  
76, 77, 86, 95, 98, 32  
110, 139, 196, 198, 216  
232, 233, 234, 236, 270  
280, 282, 316, 322, 325  
327, 329, 342, 343, 430  
433, 462, 464, 475, 483  
513, 524, 526, 551, 553  
562, 564
- Sex Hormones, Female 86  
227, 250
- Sex of Person Drawn 232, 271
- Sex Ratio 299, 557
- Sexual Intercourse 30, 262
- Sibling Differences 433
- Siblings 89, 287  
430
- Siblings, Malformations in 516
- Siblings, Mental Retardation in 48
- Sickled Erythrocytes 144
- Sickling 144, 153
- SIDS 93, 242, 350, 381, 386  
390
- Single Umbilical Artery(SUA)  
6, 136, 138
- Singletons 340, 341  
342
- Singletons, Malformations In  
322, 324, 332, 338
- Sinus, Marginal Rupture, 442
- Skull Defects 328
- Skull Defects, Epidemiology of 328
- SLM Examinations 103, 270  
457
- SLM Examiners 270
- Smoking 163, 173, 174, 544  
30, 157
- Smoking In Pregnancy 41  
47, 48, 51, 65, 93  
161, 164, 180, 182, 183  
185, 186, 187, 188, 213  
215, 303, 305, 344, 345  
348, 354, 362, 364, 366  
369, 371, 374, 376, 379  
382, 388, 389, 390, 455  
403, 492, 523
- Sociability 269
- Social Class 271
- Social Factors 246, 269  
557, 560
- Social Science Research 294
- Socioeconomic Differences 184
- Socioeconomic Factors 36  
76, 111, 119, 184, 214  
219, 294, 393, 399, 462  
466
- Socioeconomic Index 184, 270  
280, 337, 342, 461, 557  
560
- Socioeconomic Status 32  
39, 73, 112, 113, 182  
190, 236, 254, 306, 348  
391, 432, 463, 479, 496  
561

5237 - 1

- Socioeconomics 29, 33  
35, 154, 156, 157, 159
- Somatostatin, Human 102
- Spasmus Nutans 256
- Spastic Diplegia 55, 56  
411
- Speech, Correlates of 106
- Speech, Eccentric 103
- Speech, Language, Hearing,  
(SLH) Examinations 103  
270, 457
- Speech, Language, Hearing,  
(SLH) Examiners 270
- Speech Areas, Temporal 49
- Speech Function 49, 98  
103
- Speech-Language-Hearing  
Outcome at 3 Years 134  
513
- Speech Mechanism 270
- Speech Perception 219
- Speech Production 103, 270
- Speech Screening 109, 472
- Spina Bifida 267
- Spinal Cord Injury, Neonatal  
529, 530
- Spontaneous Abortion 314  
397, 398, 400, 402
- Spontaneous Closure 311
- SRA, Science Research 245, 456  
Associates
- Staining, Meconium 152
- Standardized Tests,  
Problems In 219
- Standardized Tests,  
Validity Of 219
- Stanford-Binet Intelligence  
Test 4, 5  
18, 53, 54, 81, 96  
98, 103, 116, 254, 551  
557, 561
- Stature, Maternal 171, 180
- Stillbirth 24, 149  
221, 311, 351, 421, 428  
483, 492, 515
- Stillborn Conjoined Twins  
335, 336
- Strabismus 256
- Structural Composition,  
Placental 268
- Subependymal Matrix Infarction  
535
- Substandard Housing 72
- Sudden Infant Death Syndrome  
2, 36, 93, 242, 350  
381, 386, 390
- Syndrome, Down's 282, 312  
314, 429, 547
- Syndrome, Hydatoin, Fetal  
200, 308
- Syndrome, Respiratory Distress  
(RDS) 1, 64  
84, 113, 115, 252, 333  
334, 519, 530

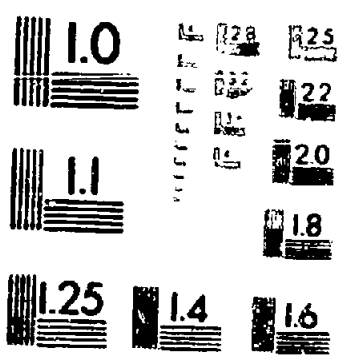
- Syndrome, Sudden Infant Death  
     2, 36, 93, 242, 350  
     381, 386, 390
- Tay-Sachs Disease 339
- Teenage, Pregnancy 33, 35  
     167, 375
- Teeth 168
- Temporal Gyrus, Superior 49
- Temporal Gyrus, Transverse 49
- Temporal Speech Areas 49
- Teratogens, Human 57, 201  
     330, 366, 486, 508, 542
- Test, Bender-Gestalt 110  
     194, 230, 231, 551, 552  
     554
- Test, Stanford-Binet  
     Intelligence 4, 5  
     18, 53, 54, 81, 96  
     98, 103, 116, 254, 551  
     557, 561
- Testing, Behavioral of Newborn  
     474, 475, 476, 477
- Tests, IQ 111, 198  
     219, 234, 287, 341, 342  
     434, 466, 552
- Tests, IQ, Problems In 219  
     434
- Tests, IQ, Validity Of 219
- Tests, Motor 111, 287  
     341
- Tests, Serologic, Maternal 493
- Throat Cultures, Rubella  
     Virus From 44, 313
- Thrombocytopenia 140
- Thyroid Activity,  
     Cross-Placental 64
- Thyroid Function 283, 284  
     285, 286, 287
- Thyroid Hormones 64
- Thyroid Replacement Therapy  
     284, 287, 519
- Thyroid-Stimulating Hormone  
     (TSH) 283, 519
- Titmus Vision Tester 43
- Tooth Size 168, 169
- Toxemia 119, 120  
     128, 129, 139, 148, 442  
     445, 541
- Toxicity, Bilirubin 272, 353  
     481
- Toxoplasmosis 485, 488
- Transfusion, Placental 153
- Trauma During Pregnancy,  
     Fetoplacental 117
- Treatment of Epileptic Seizures  
     118, 238, 406
- True Knots, Umbilical Cord 522
- Twin Differences 150, 324  
     433
- Twin Studies, Perinatal 527
- Twin Study, Louisville 102  
     434

- Twins  
 139, 147, 148, 206, 222, 247, 302, 312, 318, 327, 333, 334, 340, 341, 342, 396, 430
- Twins, Behavior of 195, 266
- Twins, Birth Order of 569
- Twins, Birthweights In 102
- Twins, Conjoined 336
- Twins, Conjoined, Stillborn 335, 336
- Twins, Dizygotic 301, 327
- Twins, Epidemiology of 319
- Twins, IQ In 266, 301
- Twins, Malformations In 321
- Twins, Malformations In Monozygotic 322, 338
- Twins, Monozygotic 41, 150, 298, 300, 301, 327, 396
- Twins, Placental Weights In 102
- Umbilical Artery, Single 6
- Umbilical Cord, Around Body 522
- Umbilical Cord, Nuchal Collar 522
- Umbilical Cord, Occult Prolapse of 448
- Umbilical Cord, Prolapsed 444, 447
- Umbilical Cord, True Knots 522
- Umbilical Phlebitis, Acute 391
- Umbilical Veins 153
- Undersized Term Infants 5
- United States Bureau of the Census 337
- United States Cities 396
- Urban Children 73, 219, 220, 462, 463, 526, 552
- Urinary Tract Infections, Maternal 273, 357, 380, 492
- Urine Test, Coproporphyrin 71
- Uterine Bleeding 276, 469, 528
- Uterine Dysfunction 543
- Values, Normative 189
- Veins, Chorionic 153
- Veins, Umbilical 153
- Ventricular Septal Defects 309, 311
- Verbal Latency Response 480
- Viral Infections in Pregnancy 46, 87, 211, 251, 264, 265, 486, 487, 488, 489, 490, 499, 503
- Virus, H-1 314
- Virus, RV 314
- Viruses 46, 487

- Vision Tester, Titmus 43
- Visual Capacity 45
- Visual Evoked Potentials 99  
233
- Visual Evoked Response (VER)  
95, 96, 98, 100
- Visual Examination 5, 473
- Vocabulary Test, Peabody  
Picture (PPVT) 107, 456
- Vocalization, Infant 472
- WAIS, Wechsler Adult  
Intelligence Scale 245
- Wechsler Adult  
Intelligence Scale, (WAIS)  
245
- Wechsler Intelligence Scale  
for Children (WISC) 194  
230, 231, 551
- Weight, Birth 1, 4  
13, 23, 25, 26, 29  
30, 53, 54, 66, 80  
81, 82, 83, 90, 114  
115, 134, 145, 146, 149  
150, 162, 168, 171, 174  
179, 180, 182, 189, 206  
207, 213, 216, 247, 248  
261, 266, 272, 287, 295  
296, 305, 354, 385, 393  
399, 419, 442, 443, 444  
445, 446, 447, 448, 452  
453, 462, 463, 483, 505  
507, 512, 517, 522, 543  
544, 546, 549, 550, 553
- Weight, Brain 148
- Weight, Low Birth 59  
64, 86, 113, 183, 209  
214, 279, 309, 437, 451  
452, 458, 479, 481, 492  
493, 496, 525
- Weight, Low Brain 259
- Weight, Ovipar 148
- Weight, Placental 160, 162  
287, 296, 354, 483, 522  
546
- Weight, Prepregnancy 171  
174, 180, 186, 187, 214  
363, 437, 453, 549, 550
- Weight Gain, Child 114, 189
- Weight Gain, Maternal 114  
119, 167, 174, 186, 187  
215, 305, 347, 354, 362  
363, 364, 365, 373, 384  
388, 391, 437, 452, 453  
512, 549, 550
- Wide Range Achievement Test  
(WRAT) 230, 231
- WISC, Wechsler Intelligence  
Scale for Children 194  
230, 231, 551
- Work 30
- Work, Heavy Manual 374
- Working in Pregnancy 393
- WRAT, Wide Range Achievement  
Test 230, 231  
551
- Written Communication 270
- X-Rays During Pregnancy 289  
509
- Zygosity Determination 29  
102, 147, 318, 319, 322  
334



END OF FILE



MICROCOPY RESOLUTION TEST CHART  
 NATIONAL BUREAU OF STANDARDS-  
 NATIONAL REFERENCE MATERIAL CENTER  
 BETHESDA, MARYLAND 20815